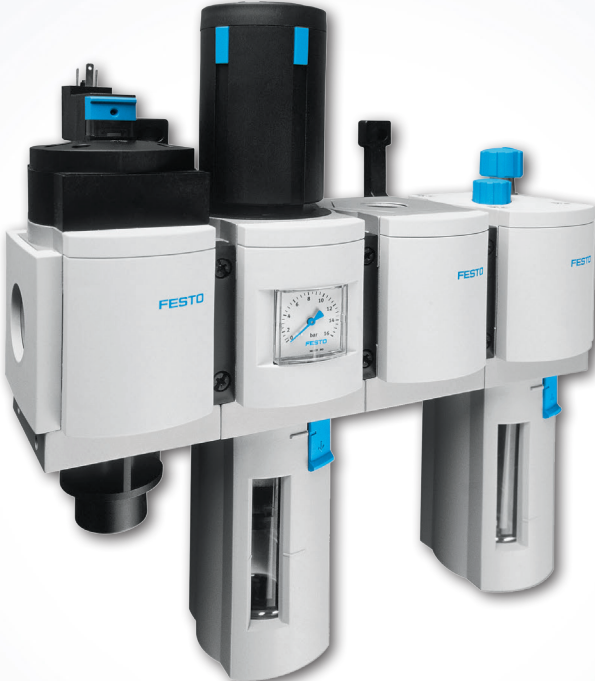
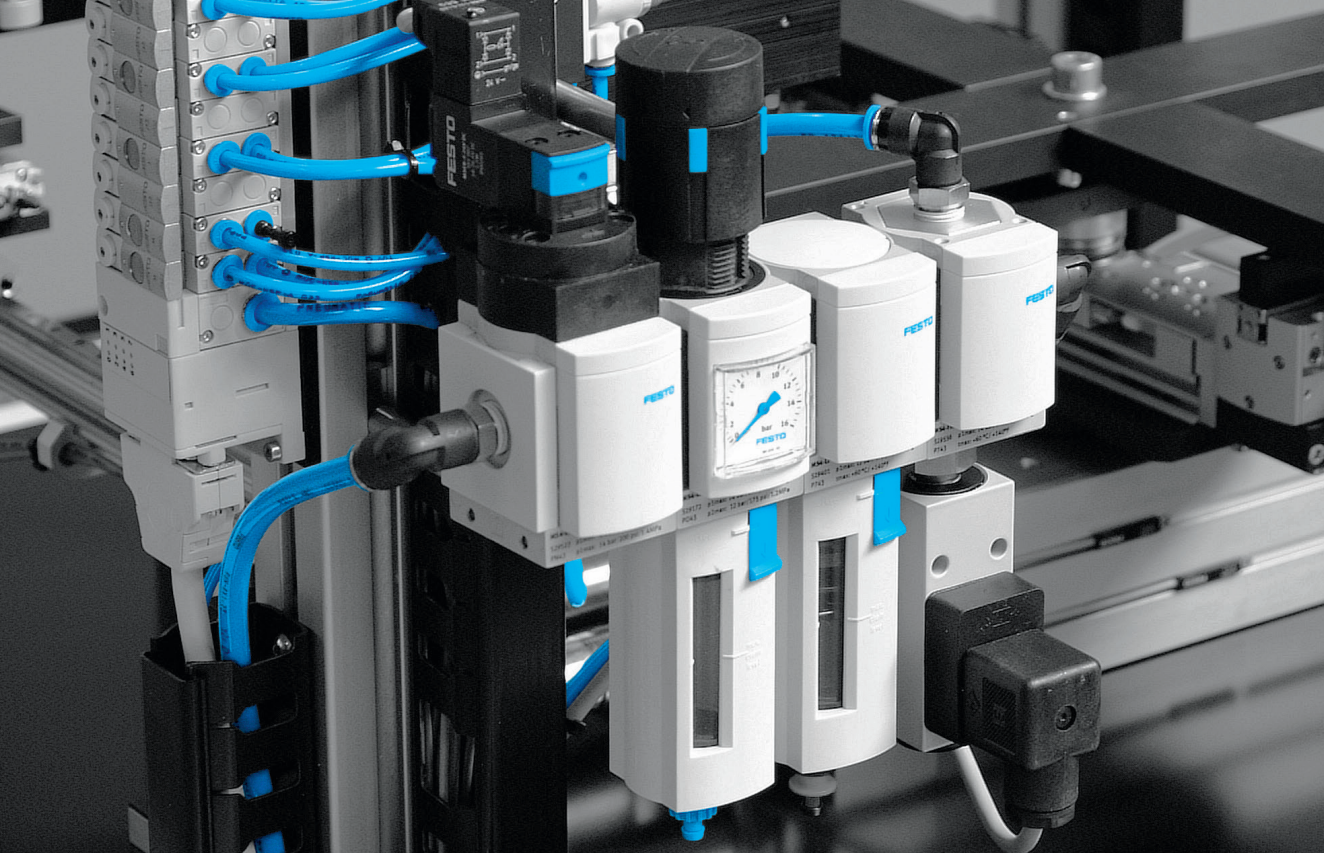


# MS Series

## Quick Order Guide





You want reduced complexity.  
You require easy running processes.  
We are your route to simplicity.

→ **WE ARE THE ENGINEERS  
OF PRODUCTIVITY.**

**Your objective: Perfect compressed air preparation  
Our solution: Freely combinable function modules**

We make your work easier. From the first idea and product selection through to after sales. We reduce complexity with new product generations and software tools for quick product selection and configuration – simplicity is our philosophy. This gives you more time for the really important things: your core business and customers. That is why we support you and work with you to pursue one great goal: **boosting your productivity**

Access all product information quickly and centrally with the new Support Portal from Festo  
[www.festo.us/sp](http://www.festo.us/sp) smartphone or tablet device <http://m.festo.us/sp>



## MS Series

Overview

### Modular, high flow and energy efficient

The MS Series Quick Order Guide is intended to help you select products which are stocked or assembled in our North American production facility, providing the best possible lead times.

All of the configuration options in this document are assembled in the North American production facility. All of the material numbers of the most common individual components in this document are stocked in the North American production facility.

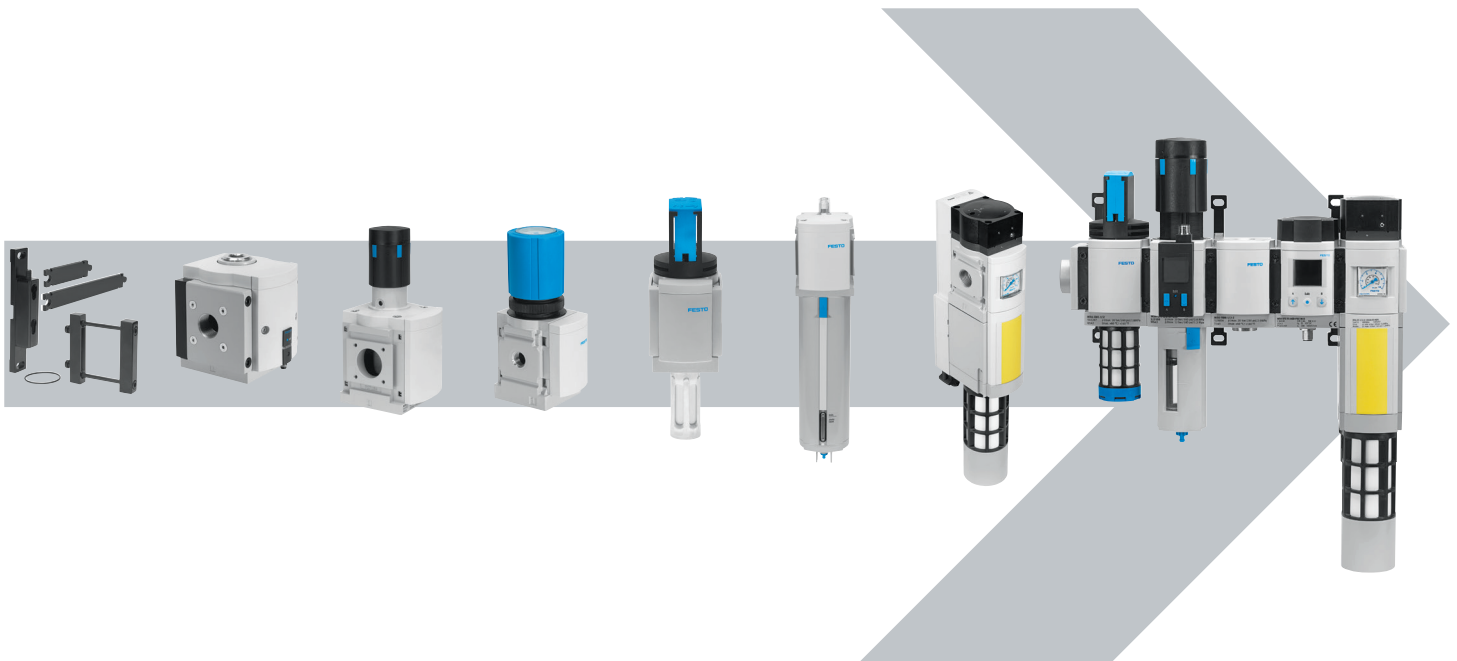
This document contains:

- MS4 and MS6 sizes only
- Pressure Regulators (LR)
- Filter Regulators (LFR)
- Standard Filters, 40 and 5 micron (LF)
- Fine and Micro Filters, 1 and 0.01 micron (LFM)
- Service Unit Combinations (MSB)

With its large product range, highly functional components and a wide choice of services, the MS Series offers a complete concept for compressed air preparation.

Access the complete range of MS Series components and assemblies on the Festo website.

→ [www.festo.us/ms](http://www.festo.us/ms)



### Order options

#### Individual components



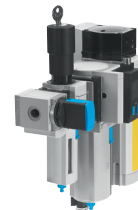
Ship time: stocked

#### Configurable components



Ship time: 4 days

#### Configurable assemblies



Ship time: 5 days

★ Core product range

F FAST™ program product range

# Pressure Regulators

MS4/MS6-LR

Mandatory Data							Optional Data
Module No.	Series	Size	Thread	Function	Connection size	Pressure range/operation	Pressure gauge alternatives
527690 (metric) 527663 (metric) 527691 (NPT) 527644 (NPT) Order example	MS	4 6	N	LR	1/8, 1/4, 3/8, 1/2, AGA, AGB, AGC, AGD, AGE, AQK, AQN, AQP, AQSR	D5 D6 D7	VS, A8, A4, RG, AD1, AD2, AD3, AD4, DM1, DM2
527691	MS	4	N	LR	AGB	D6	AD3

Components Common in North American Production Facility									
	MS4			MS6		Code	Enter code		
Module No.	527690 (metric)		527691 (NPT)		527663 (metric)		527644 (NPT)		
Series	MS							MS	MS
Size	4		4		6		6		4 or 6
Thread	ISO-G		NPT		ISO-G		NPT		N
Function	Pressure regulator							-LR	-LR
Connection size	Thread G1/8		1/8 NPT		-		-		-1/8
	Thread G1/4		1/4 NPT		Thread G1/4		1/4 NPT		-1/4
	-		-		Thread G3/8		3/8 NPT		-3/8
	-		-		Thread G1/2		1/2 NPT		-1/2
	Connecting plate G1/8		-		-		-		-AGA
	Connecting plate G1/4		-		Connecting plate G1/4		-		-AGB
	Connecting plate G3/8		-		Connecting plate G3/8		-		-AGC
	-		-		Connecting plate G1/2		-		-AGD
	-		-		Connecting plate G3/4		-		-AGE
	Connecting plate 1/8 NPT		-		-		-		-AQK
	Connecting plate 1/4 NPT		-		Connecting plate 1/4 NPT		-		-AQN
	Connecting plate 3/8 NPT		-		Connecting plate 3/8 NPT		-		-AQP
	-		-		Connecting plate 1/2 NPT		-		-AQR
-		-		Connecting plate 3/4 NPT		-		-AQS	
Pressure range/operation	0.3 ... 4 bar		0.3 ... 4 bar (1/4" NPT only)		0.3 ... 4 bar		0.2 ... 4 bar (1/2 NPT only)		-D5
	0.3 ... 7 bar		-		-		-		-D6
	0.5 ... 12 bar		-		-		-		-D7
Pressure gauge alternatives	Cover plate							-VS	
	Adapter plate for EN pressure gauge 1/8, without pressure gauge				-		-		-A8
	Adapter plate for EN pressure gauge 1/4, without pressure gauge							-A4	
	Integrated pressure gauge, red-green scale							-RG	
	Pressure sensor with display, plug M8, 1 switching output PNP, 3-pin							-AD1	
	Pressure sensor with display, plug M8, 1 switching output NPN, 3-pin							-AD2	
	Pressure sensor with display, plug M12, 1 switching output PNP, 4-pin, analogue output 4 ... 20 mA							-AD3	
	Pressure sensor with display, plug M12, 1 switching output NPN, 4-pin, analogue output 4 ... 20 mA							-AD4	
Alternative pressure gauge scale	psi							-PSI	
	Bar							-BAR	
Rotary knob alternative Gauge in knob	Small Gauge/Knob (Bar Only)		-		-		-		-DM1
	Large Gauge/Knob (Bar Only)		-		-		-		-DM2
Security	Lockable via accessories							-AS	
Type of mounting	Mounting bracket with knurled nut for regulator head							-WR	
	Mounting bracket							-WP	
	Mounting bracket							-WPM	
	Mounting bracket							-WB	
	Mounting bracket							-WBM	
Alternative flow direction	Flow direction from right to left							-Z	

Components Stocked in North American Production Facility							
Integrated pressure gauge, display unit [bar], standard rotary knob with detent, lockable via accessories							
Size	Connection	Pressure regulation range 0.3... 4 bar		Pressure regulation range 0.3... 7 bar		Pressure regulation range 0.5... 12 bar	
		Part No.	Type	Part No.	Type	Part No.	Type
MS4	G1/8	529421	MS4-LR-1/8-D5-AS	529423	MS4-LR-1/8-D6-AS	529425	MS4-LR-1/8-D7-AS
	G1/4	<b>F</b> 529415	MS4-LR-1/4-D5-AS	<b>F</b> 529417	MS4-LR-1/4-D6-AS	<b>F</b> 529419	MS4-LR-1/4-D7-AS
MS6	G1/4	529995	MS6-LR-1/4-D5-AS	529997	MS6-LR-1/4-D6-AS	529999	MS6-LR-1/4-D7-AS
	G3/8	<b>F</b> 530001	MS6-LR-3/8-D5-AS	<b>F</b> 530003	MS6-LR-3/8-D6-AS	<b>F</b> 530005	MS6-LR-3/8-D7-AS
	G1/2	529989	MS6-LR-1/2-D5-AS	529991	MS6-LR-1/2-D6-AS	529993	MS6-LR-1/2-D7-AS
Integrated pressure gauge, display unit [psi], standard rotary knob with detent, lockable via accessories							
Size	Connection	Pressure regulation range 4.5... 60 psi		Pressure regulation range 4.5... 105 psi		Pressure regulation range 4.5... 180 psi	
		Part No.	Type	Part No.	Type	Part No.	Type
MS4N	1/4 NPT	<b>F</b> 531418	MS4N-LR-1/4-D5-AS	<b>F</b> 531422	MS4N-LR-1/4-D6-AS	<b>F</b> 531426	MS4N-LR-1/4-D7-AS
	1/4 NPT	-	-	531448	MS6N-LR-1/4-D6-AS	531454	MS6N-LR-1/4-D7-AS
MS6N	3/8 NPT	531444	MS6N-LR-3/8-D5-AS	531450	MS6N-LR-3/8-D6-AS	531456	MS6N-LR-3/8-D7-AS
	1/2 NPT	<b>F</b> 531443	MS6N-LR-1/2-D5-AS	<b>F</b> 531449	MS6N-LR-1/2-D6-AS	<b>F</b> 531455	MS6N-LR-1/2-D7-AS

# Filter Regulators

MS4/MS6-LFR

## Mandatory Data

Module No.	Series	Size	Thread	Function	Connection size	Pressure regulation range	Grade of filtration	Bowl	Condensate drain
526489 (metric) 526490 (metric) 527694 (NPT) 527667 (NPT) Order example	MS	4 6	N	LFR	1/8, 1/4, 3/8, 1/2, AGA, AGB, AGC, AGD, AGE, AQK, AQN, AQP, AQR, AQS	D5 D6 D7	E, C	R, U	M, H V
527694	MS	4	N	LFR	AGA	D6	E	R	M

## Components Common in North American Production Facility

Module No.	MS4		MS6		Code	Enter code
	526489 (metric)	527694 (NPT)	526490 (metric)	527667 (NPT)		
Series	MS				MS	MS
Size	4	4	6	6	4 or 6	
Thread	ISO-G	-	ISO-G	-		
	-	NPT	-	NPT	N	
Function	Filter regulator				-LFR	-LFR
Connection size	Thread G1/8	1/8 NPT	-	-	-1/8	
	Thread G1/4	1/4 NPT	Thread G1/4	1/4 NPT	-1/4	
	-	-	Thread G3/8	3/8 NPT	-3/8	
	-	-	Thread G1/2	1/2 NPT	-1/2	
	Connecting plate G1/8	-	-	-	-AGA	
	Connecting plate G1/4	-	Connecting plate G1/4	-	-AGB	
	Connecting plate G3/8	-	Connecting plate G3/8	-	-AGC	
	-	-	Connecting plate G1/2	-	-AGD	
	-	-	Connecting plate G3/4	-	-AGE	
	Connecting plate 1/8 NPT	Connecting plate 1/8 NPT	-	-	-AQK	
	Connecting plate 1/4 NPT	Connecting plate 1/4 NPT	Connecting plate 1/4 NPT	-	-AQN	
	Connecting plate 3/8 NPT	Connecting plate 3/8 NPT	Connecting plate 3/8 NPT	-	-AQP	
	-	-	Connecting plate 1/2 NPT	-	-AQR	
	-	-	Connecting plate 3/4 NPT	-	-AQS	
Pressure range/ operation	0.3 ... 4 bar	-	0.3 ... 4 bar	-	-D5	
	0.3 ... 7 bar, manually operated		-	-	-D6	
	0.5 ... 12 bar, manually operated		-	-	-D7	
Grade of filtration	40 µm		-	-	-E	
	5 µm		-	-	-C	
Bowl	Plastic bowl with plastic bowl guard		-	-	-R	
	Metal bowl		-	-	-U	
Condensate drain	Manual		-	-	-M	
	Semi-Automatic		-	-	-H	
	Fully automatic (P1 max. 12 bar)		-	-	-V	
Pressure gauge alternatives	Cover plate		-	-	-VS	
	1/8 ISO-G Adapter plate for EN pressure gauge, without gauge		-	-	-A8	
	1/4 ISO-G Adapter plate for EN pressure gauge, without gauge		-	-	-A4	
	Integrated pressure gauge, red-green scale		-	-	-RG	
	Pressure sensor with display, plug M8, 1 switching output PNP, 3-pin		-	-	-AD1	
	Pressure sensor with display, plug M8, 1 switching output NPN, 3-pin		-	-	-AD2	
	Pressure sensor with display, plug M12, 1 switching output PNP, 4-pin, analogue output 4 ... 20 mA		-	-	-AD3	
Pressure sensor with display, plug M12, 1 switching output NPN, 4-pin, analogue output 4 ... 20 mA		-	-	-AD4		
Alternative pressure gauge scale	psi		-	-	-PSI	
	Bar		-	-	-BAR	
Rotary knob	Long rotary knob		-	-	-LD	
Security	Lockable via accessories		-	-	-AS	
Type of mounting	Mounting bracket with knurled nut for regulator head		-	-	-WR	
	Mounting bracket		-	-	-WP	
	Mounting bracket		-	-	-WPM	
	Mounting bracket		-	-	-WB	
	Mounting bracket		-	-	-WBM	
Alternative flow direction	Flow direction from right to left		-	-	-Z	



# Filter Regulators

MS4/MS6-LFR

## Optional Data

Pressure gauge alternatives	Alternative pressure gauge scale	Security	Type of mounting	Alternative flow direction
VS, A8, A4, RG, AD1 ... AD4,	PSI, BAR	AS E11	WR WP WPM WB WBM	Z

## Components Common in North American Production Facility

Pressure regulation range 0.3 ... 7 bar, integrated pressure gauge, display unit [bar], standard rotary knob with detent, lockable via accessories

Size	Condensate drain	Connection	Grade of filtration 5 µm		Grade of filtration 40 µm	
			Part No.	Type	Part No.	Type
Plastic bowl guard						
MS4	Manual rotary	G1/4	★ F	529144	MS4-LFR-1/4-D6-CRM-AS	★ F 529148 MS4-LFR-1/4-D6-ERM-AS
	Fully automatic	G1/4	★ F	529146	MS4-LFR-1/4-D6-CRV-AS	★ F 529150 MS4-LFR-1/4-D6-ERV-AS
MS6	Manual rotary	G3/8		529216	MS6-LFR-3/8-D6-CRM-AS	529220 MS6-LFR-3/8-D6-ERM-AS
		G1/2	★ F	529176	MS6-LFR-1/2-D6-CRM-AS	★ F 529180 MS6-LFR-1/2-D6-ERM-AS
	Fully automatic	G1/4		–		529202 MS6-LFR-1/4-D6-ERV-AS
		G1/2	★ F	529178	MS6-LFR-1/2-D6-CRV-AS	★ F 529182 MS6-LFR-1/2-D6-ERV-AS

Pressure regulation range 0.5 ... 12 bar, integrated pressure gauge, display unit [bar], standard rotary knob with detent, lockable via accessories

Size	Condensate drain	Connection	Grade of filtration 5 µm		Grade of filtration 40 µm	
			Part No.	Type	Part No.	Type
Plastic bowl guard						
MS4	Manual rotary	G1/8		529168	MS4-LFR-1/8-D7-CRM-AS	529172 MS4-LFR-1/8-D7-ERM-AS
		G1/4	★ F	529152	MS4-LFR-1/4-D7-CRM-AS	★ F 529156 MS4-LFR-1/4-D7-ERM-AS
	Fully automatic	G1/8		–		529174 MS4-LFR-1/8-D7-ERV-AS
		G1/4	★ F	529154	MS4-LFR-1/4-D7-CRV-AS	★ F 529158 MS4-LFR-1/4-D7-ERV-AS
MS6	Manual rotary	G1/4		529204	MS6-LFR-1/4-D7-CRM-AS	529208 MS6-LFR-1/4-D7-ERM-AS
		G3/8		–		529228 MS6-LFR-3/8-D7-ERM-AS
		G1/2	★ F	529184	MS6-LFR-1/2-D7-CRM-AS	★ F 529188 MS6-LFR-1/2-D7-ERM-AS
	Fully automatic	G1/4		–		529210 MS6-LFR-1/4-D7-ERV-AS
		G3/8		529226	MS6-LFR-3/8-D7-CRV-AS	–
		G1/2	★ F	529186	MS6-LFR-1/2-D7-CRV-AS	★ F 529190 MS6-LFR-1/2-D7-ERV-AS

Integrated as metal bowl

MS4	Manual rotary	G1/4	F	535718	MS4-LFR-1/4-D7-CUM-AS	★ F 535724 MS4-LFR-1/4-D7-EUM-AS
	Fully automatic	G1/4	★ F	535720	MS4-LFR-1/4-D7-CUV-AS	★ F 535722 MS4-LFR-1/4-D7-EUV-AS
MS6	Manual rotary	G1/2	★ F	530338	MS6-LFR-1/2-D7-CUM-AS	★ F 529192 MS6-LFR-1/2-D7-EUM-AS
	Fully automatic	G1/2	★ F	530340	MS6-LFR-1/2-D7-CUV-AS	★ F 529194 MS6-LFR-1/2-D7-EUV-AS

Pressure regulation range 4.5 ... 105 psi, integrated pressure gauge, display unit [psi], standard rotary knob with detent, lockable via accessories

Size	Condensate drain	Connection	Grade of filtration 5 µm		Grade of filtration 40 µm	
			Part No.	Type	Part No.	Type
Plastic bowl guard						
MS4N	Manual rotary	1/4 NPT	F	531229	MS4N-LFR-1/4-D6-CRM-AS	F 531221 MS4N-LFR-1/4-D6-ERM-AS
	Fully automatic	1/4 NPT	F	531233	MS4N-LFR-1/4-D6-CRV-AS	F 531225 MS4N-LFR-1/4-D6-ERV-AS
MS6N	Manual rotary	1/2 NPT	F	531306	MS6N-LFR-1/2-D6-CRM-AS	F 531294 MS6N-LFR-1/2-D6-ERM-AS
	Fully automatic	1/2 NPT	F	531312	MS6N-LFR-1/2-D6-CRV-AS	F 531300 MS6N-LFR-1/2-D6-ERV-AS

Pressure regulation range 7 ... 180 psi, integrated pressure gauge, display unit [psi], standard rotary knob with detent, lockable via accessories

Size	Condensate drain	Connection	Grade of filtration 5 µm		Grade of filtration 40 µm	
			Part No.	Type	Part No.	Type
Plastic bowl guard						
MS4N	Manual rotary	1/4 NPT	F	531213	MS4N-LFR-1/4-D7-CRM-AS	F 531205 MS4N-LFR-1/4-D7-ERM-AS
	Fully automatic	1/4 NPT	F	531217	MS4N-LFR-1/4-D7-CRV-AS	F 531209 MS4N-LFR-1/4-D7-ERV-AS
MS6N	Manual rotary	1/2 NPT	F	531282	MS6N-LFR-1/2-D7-CRM-AS	F 531270 MS6N-LFR-1/2-D7-ERM-AS
	Fully automatic	1/2 NPT	F	531288	MS6N-LFR-1/2-D7-CRV-AS	F 531276 MS6N-LFR-1/2-D7-ERV-AS

Integrated as metal bowl

MS4N	Manual rotary	1/4 NPT	F	535750	MS4N-LFR-1/4-D7-CUM-AS	F 535756 MS4N-LFR-1/4-D7-EUM-AS
	Fully automatic	1/4 NPT	F	535752	MS4N-LFR-1/4-D7-CUV-AS	F 535754 MS4N-LFR-1/4-D7-EUV-AS
MS6N	Manual rotary	1/2 NPT	F	531318	MS6N-LFR-1/2-D7-CUM-AS	F 531330 MS6N-LFR-1/2-D7-EUM-AS
	Fully automatic	1/2 NPT	F	531324	MS6N-LFR-1/2-D7-CUV-AS	F 531336 MS6N-LFR-1/2-D7-EUV-AS

★ Core product range

F FAST® program product range

# Filters

MS4/MS6-LF

Mandatory Data								Optional Data		
Module No.	Series	Size	Thread	Function	Connection size	Grade of filtration	Bowl	Condensate drain	Type of mounting	Alternative flow direction
527695 (metric) 527668 (metric) 527696 (NPT) 527669 (NPT) Order example	MS	4 6	N	LF	1/8, 1/4, 3/8, 1/2, AGA, AGB, AGC, AGD, AGE, AQK, AQN, AQP, AQR, AQS	E, C	R, U	M, H, V	WP, WPM, WB, WBM	Z
527695	MS	4	N	LF	AGB	E	R	M		

Components Common in North American Production Facility						
	MS4		MS6		Code	Enter code
Module No.	<b>527695 (metric)</b>	<b>527696 (NPT)</b>	<b>527668 (metric)</b>	<b>527669 (NPT)</b>		
Series	MS				MS	MS
Size	4	4	6	6	...	
Thread	ISO-G	-	ISO-G	-		
	-	NPT	-	NPT	N	
Function	Filters				-LF	-LF
Connection size	Thread G1/8	1/8 NPT	-	-	-1/8	
	Thread G1/4	1/4 NPT	Thread G1/4	1/4 NPT	-1/4	
	-	-	Thread G3/8	3/8 NPT	-3/8	
	-	-	Thread G1/2	1/2 NPT	-1/2	
	Connecting plate G1/8	-		-	-AGA	
	Connecting plate G1/4	-		Connecting plate G1/4	-AGB	
	Connecting plate G3/8	-		Connecting plate G3/8	-AGC	
	-	-		Connecting plate G1/2	-AGD	
	-	-		Connecting plate G3/4	-AGE	
	Connecting plate 1/8 NPT	-		-	-AQK	
	Connecting plate 1/4 NPT	-		Connecting plate 1/4 NPT	-AQN	
	Connecting plate 3/8 NPT	-		Connecting plate 3/8 NPT	-AQP	
	-	-		Connecting plate 1/2 NPT	-AQR	
-	-		Connecting plate 3/4 NPT	-AQS		
Grade of filtration	40 µm				-E	
	5 µm				-C	
Bowl	Plastic bowl with plastic bowl guard				-R	
	Metal bowl				-U	
Condensate drain	Manual				-M	
	Semi-automatic (P1 max. 12 bar)				-H	
	Fully automatic (P1 max. 12 bar)				-V	
Type of mounting	Mounting bracket (Only with connecting plate variants: AGA...AGE, AQK...AQS)				-WP	
	Mounting bracket (Only with connecting plate variants: AGA...AGE, AQK...AQS)				-WPM	
	Mounting bracket				-WB	
	Mounting bracket	-		-	-WBM	
Alternative flow direction	Flow direction from right to left				-Z	

## Filters

MS4/MS6-LF

Components Common in North American Production Facility						
Size	Condensate drain	Connection	Grade of filtration 5 µm		Grade of filtration 40 µm	
			Part No.	Type	Part No.	Type
Plastic bowl guard						
MS4	Manual rotary	G1/8	529403	MS4-LF-1/8-CRM	529407	MS4-LF-1/8-ERM
		G1/4	<b>F</b> 529395	MS4-LF-1/4-CRM	<b>F</b> 529399	MS4-LF-1/4-ERM
	Fully automatic	G1/8	529405	MS4-LF-1/8-CRV	-	-
		G1/4	<b>F</b> 529397	MS4-LF-1/4-CRV	<b>F</b> 529401	MS4-LF-1/4-ERV
MS6	Manual rotary	G3/8	529639	MS6-LF-3/8-CRM	529647	MS6-LF-3/8-ERM
		G1/2	<b>F</b> 529607	MS6-LF-1/2-CRM	<b>F</b> 529615	MS6-LF-1/2-ERM
	Fully automatic	G1/4	529625	MS6-LF-1/4-CRV	-	-
		G3/8	529641	MS6-LF-3/8-CRV	-	-
		G1/2	<b>F</b> 529609	MS6-LF-1/2-CRV	<b>F</b> 529617	MS6-LF-1/2-ERV
Integrated as metal bowl						
MS6	Manual rotary	G1/2	529611	MS6-LF-1/2-CUM	529619	MS6-LF-1/2-EUM
	Fully automatic	G1/2	529613	MS6-LF-1/4-CUV	529621	MS6-LF-1/2-EUV

Size	Condensate drain	Connection	Grade of filtration 5 µm		Grade of filtration 40 µm	
			Part No.	Type	Part No.	Type
Plastic bowl guard						
MS4N	Manual rotary	1/4 NPT	<b>F</b> 531489	MS4N-LF-1/4-CRM	<b>F</b> 513485	MS4N-LF-1/4-ERM
	Fully automatic	1/4 NPT	<b>F</b> 531493	MS4N-LF-1/4-CRV	<b>F</b> 531481	MS4N-LF-1/4-ERV
MS6N	Manual rotary	1/2 NPT	<b>F</b> 531526	MS6N-LF-1/2-CRM	<b>F</b> 531520	MS6N-LF-1/2-ERM
	Fully automatic	1/2 NPT	<b>F</b> 531532	MS6N-LF-1/2-CRV	<b>F</b> 531514	MS6N-LF-1/2-ERV
Integrated as metal bowl						
MS6N	Fully automatic	1/2 NPT	531544	MS6N-LF-1/2-CUV	-	-

★ Core product range

**F** FAST™ program product range



## Fine and Micro Filters

MS4/MS6-LFM

### Ordering Data

Module No.	Series	Size	Thread	Function	Connection size	Grade of filtration	Bowl	Condensate drain	Filter contamination	Type of mounting	Alternative flow direction
527697 (metric) 527670 (metric) 527698 (NPT) 527671 (NPT) Ordering Sample	MS	4, 6	N	LFM	1/8, 1/4, 3/8, 1/2, AGA, AGB, AGC, AGD, AGE, AQK, AQN, AQP, AQR, AQS	B, A	R, U	M, H, V	DA HF	WP, WMP, WB, WBM	Z
527697	MS	4	N	LFM	AGB	B	R	M	DA	WP	Z

### Components Common in North American Production Facility

	MS4		MS6		Code	Enter code
Module No.	<b>527697 (metric)</b>	<b>527698 (NPT)</b>	<b>527670 (metric)</b>	<b>527671 (NPT)</b>		
Series	MS				MS	MS
Size	4	4	6	6	...	
Thread	ISO-G	–	ISO-G	–		
	–	NPT	–	NPT	N	
Function	Fine and micro filter				-LF	-LFM
Connection size	Thread G1/8	Thread 1/8 NPT	–	–	-1/8	
	Thread G1/4	Thread 1/4 NPT	Thread G1/4	Thread 1/4 NPT	-1/4	
	–	–	Thread G3/8	Thread 3/8 NPT	-3/8	
	–	–	Thread G1/2	Thread 1/2 NPT	-1/2	
	Connecting plate G1/8	–	–	–	-AGA	
	Connecting plate G1/4	–	Connecting plate G1/4	–	-AGB	
	Connecting plate G3/8	–	Connecting plate G3/8	–	-AGC	
	–	–	Connecting plate G1/2	–	-AGD	
	–	–	Connecting plate G3/4	–	-AGE	
	Connecting plate 1/8 NPT	–	–	–	-AQK	
	Connecting plate 1/4 NPT	–	Connecting plate 1/4 NPT	–	-AQN	
	Connecting plate 3/8 NPT	–	Connecting plate 3/8 NPT	–	-AQP	
	–	–	Connecting plate 1/2 NPT	–	-AQR	
	–	–	Connecting plate 3/4 NPT	–	-AQS	
Grade of filtration	1 µm		–		-B	
	0.01 µm		–		-A	
Bowl	Plastic bowl with plastic bowl guard		–		-R	
	Metal bowl		–		-U	
Condensate drain	Manual		–		-M	
	Semi-automatic (P1 max. 12 bar)		–		-H	
	Fully automatic (P1 max. 12 bar)		–		-V	
Flow Rate	–		High flow rate (G1/2 Only)	–	-HF	
Filter contamination sensing	Differential pressure indicator (G1/4 only)	–	Differential pressure indicator (G1/2 only)	–	-DA	
Type of mounting	Mounting bracket (Only with connecting plate variants: AGA...AGE, AQK...AQS)				-WP	
	Mounting bracket (Only with connecting plate variants: AGA...AGE, AQK...AQS)				-WPM	
	Mounting bracket				-WB	
	Mounting bracket				-WBM	
Alternative flow direction	Flow direction from right to left				-Z	

## Fine and Micro Filters

MS4/MS6-LFM

Components Common in North American Production Facility						
Without differential pressure indicator						
Size	Condensate drain	Connection	Grade of filtration 0.01 µm		Grade of filtration 1 µm	
			Part No.	Type	Part No.	Type
Plastic bowl guard						
MS4	Manual rotary	G1/8	529463	MS4-LFM-1/8-ARM	-	
		G1/4	F 529459	MS4-LFM-1/4-ARM	F 529461	MS4-LFM-1/4-BRM
MS6	Manual rotary	G1/2	F 529655	MS6-LFM-1/2-ARM	F 529659	MS6-LFM-1/2-BRM
	Fully automatic	G1/2	530502	MS6-LFM-1/2-ARV	-	
Integrated as metal bowl						
MS4	Fully automatic	G1/4	F 535768	MS4-LFM-1/4-AUV	F 535766	MS4-LFM-1/4-BUV
MS6	Fully automatic	G1/2	F 529657	MS6-LFM-1/2-AUV	F 529661	MS6-LFM-1/2-BUV
With differential pressure indicator						
Plastic bowl guard						
MS4	Manual rotary	G1/4	536822	MS4-LFM-1/4-ARM-DA	-	
MS6	Manual rotary	G1/2	536871	MS6-LFM-1/2-ARM-DA	536835	MS6-LFM-1/2-BRM-DA
	Fully automatic	G1/2	536877	MS6-LFM-1/2-ARV-DA	536841	MS6-LFM-1/2-BRV-DA
Integrated as metal bowl						
MS4	Fully automatic	G1/4	537214	MS4-LFM-1/4-AUV-DA	-	
MS6	Fully automatic	G1/2	536883	MS6-LFM-1/2-AUV-DA	536847	MS6-LFM-1/2-BUV-DA
Integrated as metal bowl and high flow rate						
MS6	Fully automatic	G1/2	552926	MS6-LFM-1/2-AUV-HF-DA	552925	MS6-LFM-1/2-BUV-HF-DA
Without differential pressure indicator						
Size	Condensate drain	Connection	Grade of filtration 0.01 µm		Grade of filtration 1 µm	
			Part No.	Type	Part No.	Type
Plastic bowl guard						
MS4N	Manual rotary	1/4 NPT	F 531812	MS4N-LFM-1/4-ARM	F 531810	MS4N-LFM-1/4-BRM
MS6N	Manual rotary	1/2 NPT	F 531861	MS6N-LFM-1/2-ARM	F 531849	MS6N-LFM-1/2-BRM
	Fully automatic	1/2 NPT	531867	MS6N-LFM-1/2-ARV	531855	MS6N-LFM-1/2-BRV
Integrated as metal bowl						
MS4N	Fully automatic	1/4 NPT	F 535776	MS6N-LFM-1/4-AUV	F 535774	MS4N-LFM-1/4-BUV
MS6N	Fully automatic	1/2 NPT	F 531879	MS6N-LFM-1/2-AUV	F 531873	MS6N-LFM-1/2-BUV

Components Common in North American Production Facility						
With differential pressure indicator						
Size	Condensate drain	Connection	Grade of filtration 0.01 µm		Grade of filtration 1 µm	
			Part No.	Type	Part No.	Type
Plastic bowl guard						
MS4	Manual rotary	G1/8	536821	MS4-LFM-1/8-ARM-DA	-	
		G1/4	536822	MS4-LFM-1/4-ARM-DA	536818	MS4-LFM-1/4-BRM-DA
MS6	Manual rotary	G1/4	536869	MS6-LFM-1/4-ARM-DA	536833	MS6-LFM-1/4-BRM-DA
		G3/8	536870	MS6-LFM-3/8-ARM-DA	-	
		G1/2	536871	MS6-LFM-1/2-ARM-DA	536835	MS6-LFM-1/2-BRM-DA
	Fully Automatic	G1/2	536877	MS6-LFM-1/2-ARV-DA	536841	MS6-LFM-1/2-BRV-DA
Integrated as metal bowl						
MS4	Fully Automatic	G1/4	537214	MS4-LFM-1/4-AUV-DA	-	
MS6	Fully Automatic	G1/2	536883	MS6-LFM-1/2-AUV-DA	536847	MS6-LFM-1/2-BUV-DA
Integrated as metal bowl and high flow rate						
MS6	Fully automatic	G1/2	552926	MS6-LFM-1/2-AUV-HF-DA	552925	MS6-LFM-1/2-BUV-HF-DA

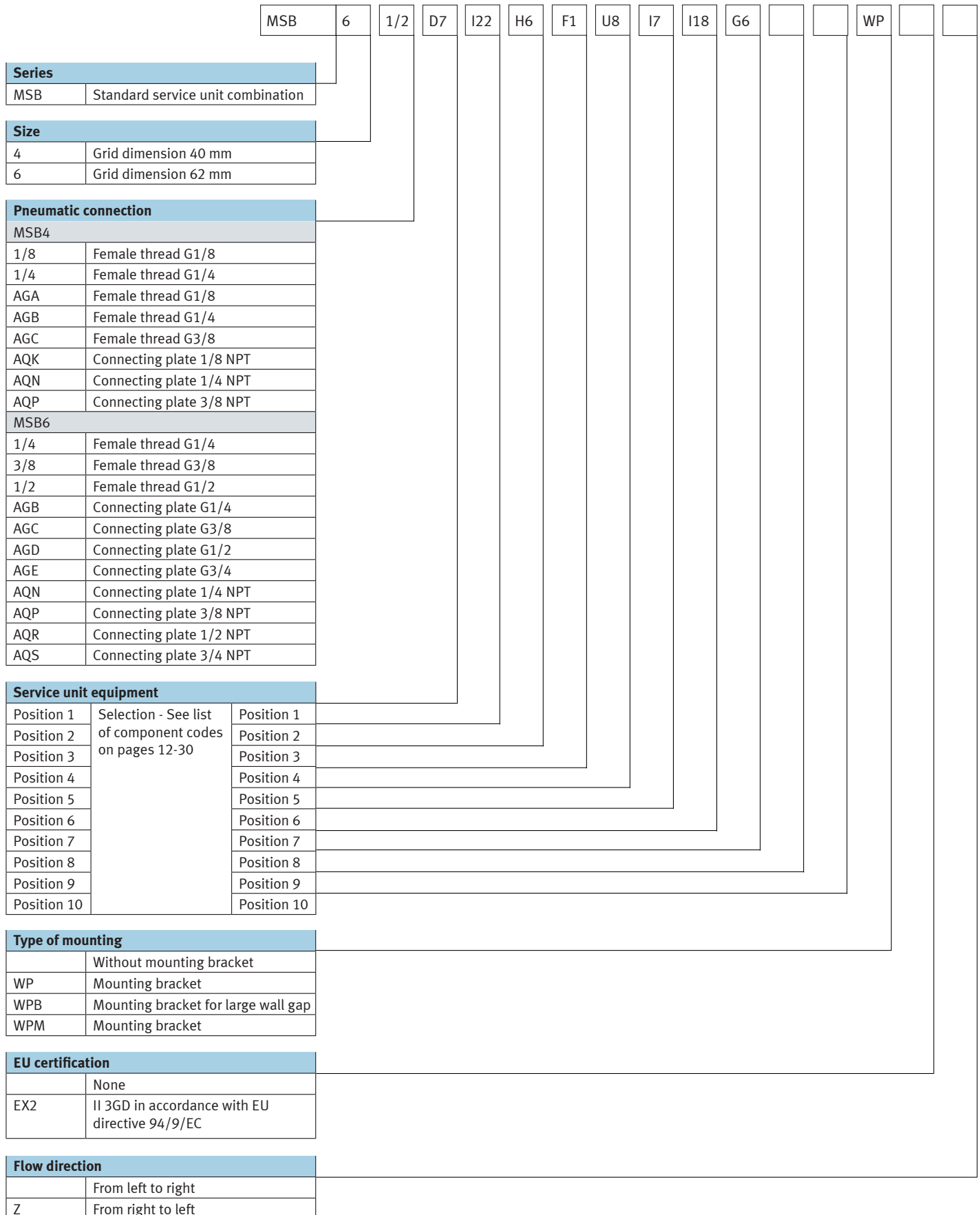
★ Core product range

F FAST™ program product range

## Service Unit Combinations Type codes

MSB4/MSB6

This chart shows how to build an Order Code for a service unit assembly (MSB) containing multiple components. Each component is denoted with a character code (ie:A1). The complete list of components which we assemble in the North American production facility are on the following pages. It is helpful to use the Online Configurator to build your Order Code.



**Overview list - Service units MSB4/6 & MSB4/6N**

MSB CODE	ISO-G Porting					NPT Porting					Type	Description
	MSB4		MSB6			MSB4N		MSB6N				
	1/8	1/4	1/4	3/8	1/2	1/8	1/4	1/4	3/8	1/2		
Soft-start valve MS-DL, pneumatically actuated												
A1	●	★	●	★	★	●	★	●	←	★	MS-DL	Cover plate
A2	●	★	●	★	★	●	★	●	←	★	MS-DL-AD7	Pressure sensor with operational status indicator (plug M8, threshold value comparator, PNP, N/O contact)
Soft-start valve MS-DE, electrically actuated												
B1	●	★	●	★	★	●	★	●	★	★	MS-DE-V24	Supply voltage 24 V DC, operating pressure 4 ... 14 bar (MS4) / 4 ... 18 bar (MS6), electrical connection to EN 175301-803 (plug connector, type C), cover plate
B2	●	★	●	★	★	●	★	●	★	★	MS-DE-V110	Supply voltage 110 V AC, operating pressure 4 ... 14 bar (MS4) / 4 ... 18 bar (MS6), electrical connection to EN 175301-803 (plug connector, type C), cover plate
B3	●	●	●	●	●	●	●	●	●	●	MS-DE-V230	Supply voltage 230 V AC, operating pressure 4 ... 14 bar (MS4) / 4 ... 18 bar (MS6), electrical connection to EN 175301-803 (plug connector, type C), cover plate
B4	●	★	●	★	★	●	★	●	★	★	MS-DE-10V24	Supply voltage 24 V DC, operating pressure 4 ... 10 bar, electrical connection to EN 175301-803 (plug connector, type C), cover plate
B5	●	●	●	●	●	-	-	-	-	-	MS-DE-V24-EX2	Supply voltage 24 V DC, operating pressure 4 ... 14 bar (MS4) / 4 ... 18 bar (MS6), electrical connection to EN 175301-803 (plug connector, type C), cover plate, to EU Explosion Protection Directive (ATEX)
On-off valve MS-EM1, manually actuated												
C3	★	★	★	★	★	★	★	★	★	★	MS-EM1	Without silencer, cover plate
C4	★	★	★	★	★	★	★	★	★	★	MS-EM1-S	Silencer, cover plate
On-off valve MS-EE, electrically actuated												
D1	★	★	★	★	★	★	★	★	★	★	MS-EE-V24	Supply voltage 24 V DC, operating pressure 4 ... 14 bar (MS4) / 4 ... 18 bar (MS6), electrical connection to EN 175301-803 (plug connector, type C), without silencer, cover plate
D2	★	★	★	★	★	★	★	★	★	★	MS-EE-V110	Supply voltage 110 V AC, operating pressure 4 ... 14 bar (MS4) / 4 ... 18 bar (MS6), electrical connection to EN 175301-803 (plug connector, type C), without silencer, cover plate
D3	●	●	●	●	●	●	●	●	●	●	MS-EE-V230	Supply voltage 230 V AC, operating pressure 4 ... 14 bar (MS4) / 4 ... 18 bar (MS6), electrical connection to EN 175301-803 (plug connector, type C), without silencer, cover plate
D4	★	★	★	★	★	★	★	★	★	★	MS-EE-V24-S	Supply voltage 24 V DC, operating pressure 4 ... 10 bar, electrical connection to EN 175301-803 (plug connector, type C), silencer, cover plate
D5	★	★	★	★	★	★	★	★	★	★	MS-EE-V110-S	Supply voltage 110 V AC, operating pressure 4 ... 10 bar, electrical connection to EN 175301-803 (plug connector, type C), silencer, cover plate
D6	●	●	●	●	●	●	●	●	●	●	MS-EE-V30-S	Supply voltage 230 V AC, operating pressure 4 ... 10 bar, electrical connection to EN 175301-803 (plug connector, type C), silencer, cover plate
D7	★	★	★	★	★	★	★	★	★	★	MS-EE-10V24	Supply voltage 24 V DC, operating pressure 4 ... 10 bar, electrical connection to EN 175301-803 (plug connector, type C), without silencer, cover plate
D8	★	★	★	★	★	★	★	★	★	★	MS-EE-10V24-S	Supply voltage 24 V DC, operating pressure 4 ... 10 bar, electrical connection to EN 175301-803 (plug connector, type C), silencer, cover plate
D9	●	●	●	●	●	-	-	-	-	-	MS-EE-V24-EX2	Supply voltage 24 V DC, operating pressure 4 ... 14 bar (MS4) / 4 ... 18 bar (MS6), electrical connection to EN 175301-803 (plug connector, type C), w/o silencer, cover plate, to EU Explosion Protection Directive (ATEX)
D10	●	●	●	●	●	-	-	-	-	-	MS-EE-V24-S-EX2	Supply voltage 24 V DC, operating pressure 4 ... 10 bar, electrical connection to EN 175301-803 (plug connector, type C), silencer, cover plate, to EU Explosion Protection Directive (ATEX)
D11	-	★	-	-	★	-	-	-	-	-	MS-EE-10V24-AD7	Supply voltage 24 V DC, operating pressure 4 ... 10 bar, electrical connection to EN 175301-803 (plug connector, type C), without silencer, pressure sensor with operational status indicator (plug M8, threshold value comparator, PNP, N/O contact)
D12	-	★	-	-	★	-	-	-	-	-	MS-EE-10V24-S-AD7	Supply voltage 24 V DC, operating pressure 4 ... 10 bar, electrical connection to EN 175301-803 (plug connector, type C), silencer, pressure sensor with operational status indicator (plug M8, threshold value comparator, PNP, N/O contact)
★	Available and produced in North American Production Facility											
←	NPT ported units available through Festo Germany. Metric ported units with NPT ported connecting plates are available through North American Production Facility.											
●	Produced in Festo Germany only!											
-	Not an available Festo design or configurable option											

**Overview list - Service units MSB4/6 & MSB4/6N**

MSB CODE	ISO-G Porting					NPT Porting					Type	Description
	MSB4		MSB6			MSB4N		MSB6N				
	1/8	1/4	1/4	3/8	1/2	1/8	1/4	1/4	3/8	1/2		
On-off valve MS-EE, electrically actuated (cont..)												
D13	-	☆	-	-	☆	-	-	-	-	-	MS-EE-10V24-S-AD7	Supply voltage 24 V DC, operating pressure 4 ... 10 bar, electrical connection to EN 175301-803 (plug connector, type C), silencer, pressure sensor with operational status indicator (plug M8, threshold value comparator, PNP, N/O contact)
D14	-	☆	-	-	☆	-	-	-	-	-	MS-EE-10V2P-AD7	Supply voltage 24 V DC, operating pressure 4 ... 10 bar, electrical connection to IEC 61076-2-101 (plug connector M12x1, 2-pin), without silencer, pressure sensor with operational status indicator (plug M8, threshold value comparator, PNP, N/O contact)
D15	-	☆	-	-	☆	-	-	-	-	-	MS-EE-10V24P-S-AD7	Supply voltage 24 V DC, operating pressure 4 ... 10 bar, electrical connection to IEC 61076-2-101 (plug connector M12x1, 2-pin), silencer, pressure sensor with operational status indicator (plug M8, threshold value comparator, PNP, N/O contact)
D19	-	☆	-	-	☆	-	-	-	-	-	MS-EE-10V24P	Supply voltage 24 V DC, operating pressure 4 ... 10 bar, electrical connection to IEC 61076-2-101 (plug connector M12x1, 2-pin), without silencer, cover plate
D20	-	☆	-	-	☆	-	-	-	-	-	MS-EE-10V24P-S	Supply voltage 24 V DC, operating pressure 4 ... 10 bar, electrical connection to IEC 61076-2-101 (plug connector M12x1, 2-pin), silencer, cover plate
Branching module MS-FRM/distributor block MS-FRM-FRZ												
F1	☆	☆	☆	☆	☆	☆	☆	☆	☆	☆	MS-FRM	Cover plate
F2	●	●	●	●	●	●	●	●	●	●	MS-FRM-I	Integrated non-return function, cover plate
F3	☆	☆	☆	☆	☆	☆	☆	☆	☆	☆	MS-FRM-Y	Pressure switch without display (plug socket, EN 175 301, type A, cube), cover plate
F6	☆	☆	☆	☆	☆	☆	☆	☆	☆	☆	MS-FRM-AD1	Pressure sensor with LCD display (plug M8, 1 switching output PNP, 3-pin)
F7	●	●	●	●	●	●	●	●	●	●	MS-FRM-I-AD1	Integrated non-return function, pressure sensor with LCD display (plug M8, 1 switching output PNP, 3-pin)
F8	●	●	●	●	●	●	●	●	●	●	MS-FRM-M12	Pressure switch without display (plug socket, round, M12, 4-pin), cover plate
F9	●	●	●	●	●	●	●	●	●	●	MS-FRM-I-M12	Integrated non-return function, pressure switch without display (plug socket, round, M12, 4-pin), cover plate
F10	☆	☆	☆	☆	☆	☆	☆	☆	☆	☆	MS-FRM-AD3	Pressure sensor with LCD display (plug M12, 1 switching output PNP, 4-pin)
F11	●	●	●	●	●	●	●	●	●	●	MS-FRM-I-AD3	Integrated non-return function, pressure sensor with LCD display (plug M12, 1 switching output PNP, 4-pin)
F12	☆	☆	☆	☆	☆	☆	☆	☆	☆	☆	MS-FRM-AD7	Pressure sensor with operational status indicator (plug M8, threshold value comparator, PNP, N/O contact)
F13	●	●	●	●	●	●	●	●	●	●	MS-FRM-I-AD7	Integrated non-return function, pressure sensor with operational status indicator (plug M8, threshold value comparator, PNP, N/O contact)
F14	☆	☆	☆	☆	☆	←	←	←	←	←	MS-FRM-FRZ	Half grid dimension 20 mm
Membrane air dryer MS-LDM1												
G3	●	●	-	-	-	●	●	-	-	-	MS-LDM1-P05	Flow cartridge 50 l/min
G4	●	●	-	-	-	●	●	-	-	-	MS-LDM1-P10	Flow cartridge 100 l/min
G5	-	-	●	●	●	-	-	●	●	●	MS-LDM1-P20	Flow cartridge 200 l/min
G6	-	-	●	●	●	-	-	●	●	●	MS-LDM1-P30	Flow cartridge 300 l/min
G7	-	-	●	●	●	-	-	●	●	●	MS-LDM1-P40	Flow cartridge 400 l/min
Filter MS-LF												
H1	☆	☆	☆	☆	☆	☆	☆	☆	☆	☆	MS-LF-ERV	Grade of filtration 40 µm, plastic bowl guard, fully automatic condensate drain
H2	☆	☆	☆	☆	☆	☆	☆	☆	☆	☆	MS-LF-ERM	Grade of filtration 40 µm, plastic bowl guard, manual condensate drain
H3	☆	☆	☆	☆	☆	☆	☆	☆	☆	☆	MS-LF-CRM	Grade of filtration 5 µm, plastic bowl guard, manual condensate drain
H4	☆	☆	☆	☆	☆	☆	☆	☆	☆	☆	MS-LF-CRV	Grade of filtration 5 µm, plastic bowl guard, fully automatic condensate drain
H5	☆	☆	☆	☆	☆	☆	☆	☆	☆	☆	MS-LF-CUM	Grade of filtration 5 µm, metal bowl, manual condensate drain
H6	☆	☆	☆	☆	☆	☆	☆	☆	☆	☆	MS-LF-CUV	Grade of filtration 5 µm, metal bowl, fully automatic condensate drain
☆	Available and produced in North American Production Facility											
←	NPT ported units available through Festo Germany. Metric ported units with NPT ported connecting plates are available through North American Production Facility.											
●	Produced in Festo Germany only!											
-	Not an available Festo design or configurable option											

**Overview list - Service units MSB4/6 & MSB4/6N**

MSB CODE	ISO-G Porting					NPT Porting					Type	Description
	MSB4		MSB6			MSB4N		MSB6N				
	1/8	1/4	1/4	3/8	1/2	1/8	1/4	1/4	3/8	1/2		
FILTER MS-LF (cont...)												
H7	☆	☆	☆	☆	☆	☆	☆	☆	☆	☆	MS-LF-EUV	Grade of filtration 40 µm, metal bowl, fully automatic condensate drain
H8	☆	☆	☆	☆	☆	☆	☆	☆	☆	☆	MS-LF-EUM	Grade of filtration 40 µm, metal bowl, manual condensate drain
Fine and micro filter MS-LFM												
I1	☆	☆	☆	☆	☆	☆	☆	☆	☆	☆	MS-LFM-BRM	Grade of filtration 1 µm, plastic bowl guard, manual condensate drain
I2	-	-	☆	☆	☆	-	-	☆	☆	☆	MS-LFM-BRV	Grade of filtration 1 µm, plastic bowl guard, fully automatic condensate drain
I3	☆	☆	☆	☆	☆	☆	☆	☆	☆	☆	MS-LFM-ARM	Grade of filtration 0.01 µm, plastic bowl guard, manual condensate drain
I4	-	-	☆	☆	☆	-	-	☆	☆	☆	MS-LFM-ARV	Grade of filtration 0.01 µm, plastic bowl guard, fully automatic condensate drain
I5	☆	☆	☆	☆	☆	☆	☆	☆	☆	☆	MS-LFM-ARM-DA	Grade of filtration 0.01 µm, plastic bowl guard, manual condensate drain, optical differential pressure indicator
I6	-	-	☆	☆	☆	-	-	☆	☆	☆	MS-LFM-ARV-DA	Grade of filtration 0.01 µm, plastic bowl guard, fully automatic condensate drain, optical differential pressure indicator
I7	☆	☆	☆	☆	☆	☆	☆	☆	☆	☆	MS-LFM-BUV	Grade of filtration 1 µm, metal bowl, fully automatic condensate drain
I8	☆	☆	☆	☆	☆	☆	☆	☆	☆	☆	MS-LFM-AUV	Grade of filtration 0.01 µm, metal bowl, fully automatic condensate drain
I9	☆	☆	☆	☆	☆	☆	☆	☆	☆	☆	MS-LFM-BUV-DA	Grade of filtration 1 µm, metal bowl, fully automatic condensate drain, optical differential pressure indicator
I10	☆	☆	☆	☆	☆	☆	☆	☆	☆	☆	MS-LFM-BRM-DA	Grade of filtration 1 µm, plastic bowl guard, manual condensate drain, optical differential pressure indicator
I11	-	-	☆	☆	☆	-	-	☆	☆	☆	MS-LFM-BRV-DA	Grade of filtration 1 µm, plastic bowl guard, fully automatic condensate drain, optical differential pressure indicator
I12	☆	☆	☆	☆	☆	☆	☆	☆	☆	☆	MS-LFM-AUV-DA	Grade of filtration 0.01 µm, metal bowl, fully automatic condensate drain, optical differential pressure indicator
I13	●	●	●	●	●	●	●	●	●	●	MS-LFM-BRM-DP	Grade of filtration 1 µm, plastic bowl guard, manual condensate drain, filter contamination indicator (plug M8, PNP, 3-pin)
I14	-	-	●	●	●	-	-	●	●	●	MS-LFM-BRV-DP	Grade of filtration 1 µm, plastic bowl guard, fully automatic condensate drain, filter contamination indicator (plug M8, PNP, 3-pin)
I15	●	●	●	●	●	●	●	●	●	●	MS-LFM-ARM-DP	Grade of filtration 0.01 µm, plastic bowl guard, manual condensate drain, filter contamination indicator (plug M8, PNP, 3-pin)
I16	-	-	●	●	●	-	-	●	●	●	MS-LFM-ARV-DP	Grade of filtration 0.01 µm, plastic bowl guard, fully automatic condensate drain, filter contamination indicator (plug M8, PNP, 3-pin)
I17	●	●	●	●	●	●	●	●	●	●	MS-LFM-BUV-DP	Grade of filtration 1 µm, metal bowl, fully automatic condensate drain, filter contamination indicator (plug M8, PNP, 3-pin)
I18	●	●	●	●	●	●	●	●	●	●	MS-LFM-AUV-DP	Grade of filtration 0.01 µm, metal bowl, fully automatic condensate drain, filter contamination indicator (plug M8, PNP, 3-pin)
I23	-	-	●	●	☆	-	-	●	●	←	MS-LFM-BUV-HF	Grade of filtration 1 µm, metal bowl, fully automatic condensate drain, high flow rate
☆	Available and produced in North American Production Facility											
←	NPT ported units available through Festo Germany. Metric ported units with NPT ported connecting plates are available through North American Production Facility.											
●	Produced in Festo Germany only!											
-	Not an available Festo design or configurable option											



**Overview list - Service units MSB4/6 & MSB4/6N**

MSB CODE	ISO-G Porting					NPT Porting					Type	Description
	MSB4		MSB6			MSB4N		MSB6N				
	1/8	1/4	1/4	3/8	1/2	1/8	1/4	1/4	3/8	1/2		
Fine and micro filter MS-LFM (cont...)												
I24	-	-	●	●	★	-	-	●	●	←	MS-LFM-AUV-HF	Grade of filtration 0.01 µm, metal bowl, fully automatic condensate drain, high flow rate
I25	-	-	●	●	★	-	-	●	●	←	MS-LFM-BUV-HF-DA	Grade of filtration 1 µm, metal bowl, fully automatic condensate drain, high flow rate, optical differential pressure indicator
I26	-	-	●	●	★	-	-	●	●	←	MS-LFM-AUV-HF-DA	Grade of filtration 0.01 µm, metal bowl, fully automatic condensate drain, high flow rate, optical differential pressure indicator
I7	-	-	●	●	●	-	-	●	●	●	MS-LFM-BUV-HF-DP	Grade of filtration 1 µm, metal bowl, fully automatic condensate drain, high flow rate, filter contamination indicator (plug M8, PNP, 3-pin)
I28	-	-	●	●	●	-	-	●	●	●	MS-LFM-AUV-HF-DP	Grade of filtration 0.01 µm, metal bowl, fully automatic condensate drain, high flow rate, filter contamination indicator (plug M8, PNP, 3-pin)
I29	-	-	●	●	●	-	-	●	●	●	MS-LFM-ARV-HP	Grade of filtration 0.01 µm, plastic bowl guard, fully automatic condensate drain, low flow rate suitable for sealing air and cleaning air
I30	-	-	●	●	●	-	-	●	●	●	MS-LFM-BRV-HP	Grade of filtration 1 µm, plastic bowl guard, fully automatic condensate drain, low flow rate suitable for sealing air and cleaning air
I31	-	-	●	●	●	-	-	●	●	●	MS-LFM-ARV-HP-DP	Grade of filtration 0.01 µm, plastic bowl guard, fully automatic condensate drain, low flow rate suitable for sealing air and cleaning air, filter contamination indicator (plug M8, PNP, 3-pin)
I32	-	-	●	●	●	-	-	●	●	●	MS-LFM-BRV-HP-DP	Grade of filtration 1 µm, plastic bowl guard, fully automatic condensate drain, low flow rate suitable for sealing air and cleaning air, filter contamination indicator (plug M8, PNP, 3-pin)
Filter regulator MS-LFR												
J1	★	★	★	★	★	★	★	★	★	★	MS-LFR-D7-ERM-AS	Pressure regulation range 0.5 ... 12 bar, grade of filtration 40 µm, plastic bowl guard, manual condensate drain, integrated MS pressure gauge with outer scale in bar and inner scale in psi, stand ard rotary knob with detent, lockable with accessories
J2	★	★	★	★	★	★	★	★	★	★	MS-LFR-D7-ERV-AS	Pressure regulation range 0.5 ... 12 bar, grade of filtration 40 µm, plastic bowl guard, fully automatic condensate drain, integrated MS pressure gauge with outer scale in bar and inner scale in psi, stand ard rotary knob with detent, lockable with accessories
J3	★	★	★	★	★	★	★	★	★	★	MS-LFR-D7-CRM-AS	Pressure regulation range 0.5 ... 12 bar, grade of filtration 5 µm, plastic bowl guard, manual condensate drain, integrated MS pressure gauge with outer scale in bar and inner scale in psi, stand ard rotary knob with detent, lockable with accessories
J4	★	★	★	★	★	★	★	★	★	★	MS-LFR-D7-CRV-AS	Pressure regulation range 0.5 ... 12 bar, grade of filtration 5 µm, plastic bowl guard, fully automatic condensate drain, integrated MS pressure gauge with outer scale in bar and inner scale in psi, stand ard rotary knob with detent, lockable with accessories
J5	★	★	★	★	★	★	★	★	★	★	MS-LFR-D6-ERM-AS	Pressure regulation range 0.3 ... 7 bar, grade of filtration 40 µm, plastic bowl guard, manual condensate drain, integrated MS pressure gauge with outer scale in bar and inner scale in psi, stand ard rotary knob with detent, lockable with accessories
J6	★	★	★	★	★	★	★	★	★	★	MS-LFR-D6-ERV-AS	Pressure regulation range 0.3 ... 7 bar, grade of filtration 40 µm, plastic bowl guard, fully automatic condensate drain, integrated MS pressure gauge with outer scale in bar and inner scale in psi, stand ard rotary knob with detent, lockable with accessories
J7	★	★	★	★	★	★	★	★	★	★	MS-LFR-D6-CRM-AS	Pressure regulation range 0.3 ... 7 bar, grade of filtration 5 µm, plastic bowl guard, manual condensate drain, integrated MS pressure gauge with outer scale in bar and inner scale in psi, stand ard rotary knob with detent, lockable with accessories
J8	★	★	★	★	★	★	★	★	★	★	MS-LFR-D6-CRV-AS	Pressure regulation range 0.3 ... 7 bar, grade of filtration 5 µm, plastic bowl guard, fully automatic condensate drain, integrated MS pressure gauge with outer scale in bar and inner scale in psi, stand ard rotary knob with detent, lockable with accessories
★	Available and produced in North American Production Facility											
←	NPT ported units available through Festo Germany. Metric ported units with NPT ported connecting plates are available through North American Production Facility.											
●	Produced in Festo Germany only!											
-	Not an available Festo design or configurable option											

**Overview list - Service units MSB4/6 & MSB4/6N**

MSB CODE	ISO-G Porting					NPT Porting					Type	Description
	MSB4		MSB6			MSB4N		MSB6N				
	1/8	1/4	1/4	3/8	1/2	1/8	1/4	1/4	3/8	1/2		
Filter regulator MS-LFR (cont...)												
J9	☆	☆	☆	☆	☆	☆	☆	☆	☆	☆	MS-LFR-D7-CUM-AS	Pressure regulation range 0.5 ... 12 bar, grade of filtration 5 µm, metal bowl, manual condensate drain, integrated MS pressure gauge with outer scale in bar and inner scale in psi, standard rotary knob with detent, lockable with accessories
J10	☆	☆	☆	☆	☆	☆	☆	☆	☆	☆	MS-LFR-D7-CUV-AS	Pressure regulation range 0.5 ... 12 bar, grade of filtration 5 µm, metal bowl, fully automatic condensate drain, integrated MS pressure gauge with outer scale in bar and inner scale in psi, standard rotary knob with detent, lockable with accessories
J11	☆	☆	☆	☆	☆	☆	☆	☆	☆	☆	MS-LFR-D7-EUM-AS	Pressure regulation range 0.5 ... 12 bar, grade of filtration 40 µm, metal bowl, manual condensate drain, integrated MS pressure gauge with outer scale in bar and inner scale in psi, standard rotary knob with detent, lockable with accessories
J12	☆	☆	☆	☆	☆	☆	☆	☆	☆	☆	MS-LFR-D7-EUV-AS	Pressure regulation range 0.5 ... 12 bar, grade of filtration 40 µm, metal bowl, fully automatic condensate drain, integrated MS pressure gauge with outer scale in bar and inner scale in psi, standard rotary knob with detent, lockable with accessories
J13	☆	☆	☆	☆	☆	☆	☆	☆	☆	☆	MS-LFR-D7-ERM-AD1-AS	Pressure regulation range 0.5 ... 12 bar, grade of filtration 40 µm, plastic bowl guard, manual condensate drain, pressure sensor with LCD display (plug M8, 1 switching output PNP, 3-pin), standard rotary knob with detent, lockable with accessories
J14	☆	☆	☆	☆	☆	☆	☆	☆	☆	☆	MS-LFR-D7-ERV-AD1-AS	Pressure regulation range 0.5 ... 12 bar, grade of filtration 40 µm, plastic bowl guard, fully automatic condensate drain, pressure sensor with LCD display (plug M8, 1 switching output PNP, 3-pin), standard rotary knob with detent, lockable with accessories
J15	☆	☆	☆	☆	☆	☆	☆	☆	☆	☆	MS-LFR-D7-CRM-AD1-AS	Pressure regulation range 0.5 ... 12 bar, grade of filtration 5 µm, plastic bowl guard, manual condensate drain, pressure sensor with LCD display (plug M8, 1 switching output PNP, 3-pin), standard rotary knob with detent, lockable with accessories
J16	☆	☆	☆	☆	☆	☆	☆	☆	☆	☆	MS-LFR-D7-CRV-AD1-AS	Pressure regulation range 0.5 ... 12 bar, grade of filtration 5 µm, plastic bowl guard, fully automatic condensate drain, pressure sensor with LCD display (plug M8, 1 switching output PNP, 3-pin), standard rotary knob with detent, lockable with accessories
Filter regulator MS-LFR												
J17	☆	☆	☆	☆	☆	☆	☆	☆	☆	☆	MS-LFR-D6-ERM-AD1-AS	Pressure regulation range 0.3 ... 7 bar, grade of filtration 40 µm, plastic bowl guard, manual condensate drain, pressure sensor with LCD display (plug M8, 1 switching output PNP, 3-pin), standard rotary knob with detent, lockable with accessories
J18	☆	☆	☆	☆	☆	☆	☆	☆	☆	☆	MS-LFR-D6-ERV-AD1-AS	Pressure regulation range 0.3 ... 7 bar, grade of filtration 40 µm, plastic bowl guard, fully automatic condensate drain, pressure sensor with LCD display (plug M8, 1 switching output PNP, 3-pin), standard rotary knob with detent, lockable with accessories
J19	☆	☆	☆	☆	☆	☆	☆	☆	☆	☆	MS-LFR-D6-CRM-AD1-AS	Pressure regulation range 0.3 ... 7 bar, grade of filtration 5 µm, plastic bowl guard, manual condensate drain, pressure sensor with LCD display (plug M8, 1 switching output PNP, 3-pin), standard rotary knob with detent, lockable with accessories
J20	☆	☆	☆	☆	☆	☆	☆	☆	☆	☆	MS-LFR-D6-CRV-AD1-AS	Pressure regulation range 0.3 ... 7 bar, grade of filtration 5 µm, plastic bowl guard, fully automatic condensate drain, pressure sensor with LCD display (plug M8, 1 switching output PNP, 3-pin), standard rotary knob with detent, lockable with accessories
J21	☆	☆	☆	☆	☆	☆	☆	☆	☆	☆	MS-LFR-D7-EUM-AD1-AS	Pressure regulation range 0.5 ... 12 bar, grade of filtration 40 µm, metal bowl, manual condensate drain, pressure sensor with LCD display (plug M8, 1 switching output PNP, 3-pin), standard rotary knob with detent, lockable with accessories
J22	☆	☆	☆	☆	☆	☆	☆	☆	☆	☆	MS-LFR-D7-EUV-AD1-AS	Pressure regulation range 0.5 ... 12 bar, grade of filtration 40 µm, metal bowl, fully automatic condensate drain, pressure sensor with LCD display (plug M8, 1 switching output PNP, 3-pin), standard rotary knob with detent, lockable with accessories
☆	Available and produced in North American Production Facility											
←	NPT ported units available through Festo Germany. Metric ported units with NPT ported connecting plates are available through North American Production Facility.											
●	Produced in Festo Germany only!											
-	Not an available Festo design or configurable option											

**Overview list - Service units MSB4/6 & MSB4/6N**

MSB CODE	ISO-G Porting					NPT Porting					Type	Description
	MSB4		MSB6			MSB4N		MSB6N				
	1/8	1/4	1/4	3/8	1/2	1/8	1/4	1/4	3/8	1/2		
Filter regulator MS-LFR (cont...)												
J23	☆	☆	☆	☆	☆	☆	☆	☆	☆	☆	MS-LFR-D7-CUM-AD1-AS	Pressure regulation range 0.5 ... 12 bar, grade of filtration 5 µm, metal bowl, manual condensate drain, pressure sensor with LCD display (plug M8, 1 switching output PNP, 3-pin), standard rotary knob with detent, lockable with accessories
J24	☆	☆	☆	☆	☆	☆	☆	☆	☆	☆	MS-LFR-D7-CUV-AD1-AS	Pressure regulation range 0.5 ... 12 bar, grade of filtration 5 µm, metal bowl, fully automatic condensate drain, pressure sensor with LCD display (plug M8, 1 switching output PNP, 3-pin), standard rotary knob with detent, lockable with accessories
J35	☆	☆	☆	☆	☆	☆	☆	☆	☆	☆	MS-LFR-D7-ERM-AD7-AS	Pressure regulation range 0.5 ... 12 bar, grade of filtration 40 µm, plastic bowl guard, manual condensate drain, pressure sensor with operational status indicator (plug M8, threshold value comparator, PNP, N/O contact), standard rotary knob with detent, lockable with accessories
J36	☆	☆	☆	☆	☆	☆	☆	☆	☆	☆	MS-LFR-D7-ERV-AD7-AS	Pressure regulation range 0.5 ... 12 bar, grade of filtration 40 µm, plastic bowl guard, fully automatic condensate drain, pressure sensor with operational status indicator (plug M8, threshold value comparator, PNP, N/O contact), standard rotary knob with detent, lockable with accessories
J37	☆	☆	☆	☆	☆	☆	☆	☆	☆	☆	MS-LFR-D7-CRM-AD7-AS	Pressure regulation range 0.5 ... 12 bar, grade of filtration 5 µm, plastic bowl guard, manual condensate drain, pressure sensor with operational status indicator (plug M8, threshold value comparator, PNP, N/O contact), standard rotary knob with detent, lockable with accessories
J38	☆	☆	☆	☆	☆	☆	☆	☆	☆	☆	MS-LFR-D7-CRV-AD7-AS	Pressure regulation range 0.5 ... 12 bar, grade of filtration 5 µm, plastic bowl guard, fully automatic condensate drain, pressure sensor with operational status indicator (plug M8, threshold value comparator, PNP, N/O contact), standard rotary knob with detent, lockable with accessories
J39	☆	☆	☆	☆	☆	☆	☆	☆	☆	☆	MS-LFR-D6-ERM-AD7-AS	Pressure regulation range 0.3 ... 7 bar, grade of filtration 40 µm, plastic bowl guard, manual condensate drain, pressure sensor with operational status indicator (plug M8, threshold value comparator, PNP, N/O contact), standard rotary knob with detent, lockable with accessories
J40	☆	☆	☆	☆	☆	☆	☆	☆	☆	☆	MS-LFR-D6-ERV-AD7-AS	Pressure regulation range 0.3 ... 7 bar, grade of filtration 40 µm, plastic bowl guard, fully automatic condensate drain, pressure sensor with operational status indicator (plug M8, threshold value comparator, PNP, N/O contact), standard rotary knob with detent, lockable with accessories
J41	☆	☆	☆	☆	☆	☆	☆	☆	☆	☆	MS-LFR-D6-CRM-AD7-AS	Pressure regulation range 0.3 ... 7 bar, grade of filtration 5 µm, plastic bowl guard, manual condensate drain, pressure sensor with operational status indicator (plug M8, threshold value comparator, PNP, N/O contact), standard rotary knob with detent, lockable with accessories
J42	☆	☆	☆	☆	☆	☆	☆	☆	☆	☆	MS-LFR-D6-CRV-AD7-AS	Pressure regulation range 0.3 ... 7 bar, grade of filtration 5 µm, plastic bowl guard, fully automatic condensate drain, pressure sensor with operational status indicator (plug M8, threshold value comparator, PNP, N/O contact), standard rotary knob with detent, lockable with accessories
J43	☆	☆	☆	☆	☆	☆	☆	☆	☆	☆	MS-LFR-D7-EUM-AD7-AS	Pressure regulation range 0.5 ... 12 bar, grade of filtration 40 µm, metal bowl, manual condensate drain, pressure sensor with operational status indicator (plug M8, threshold value comparator, PNP, N/O contact), standard rotary knob with detent, lockable with accessories
J44	☆	☆	☆	☆	☆	☆	☆	☆	☆	☆	MS-LFR-D7-EUV-AD7-AS	Pressure regulation range 0.5 ... 12 bar, grade of filtration 40 µm, metal bowl, fully automatic condensate drain, pressure sensor with operational status indicator (plug M8, threshold value comparator, PNP, N/O contact), standard rotary knob with detent, lockable with accessories
☆	Available and produced in North American Production Facility											
←	NPT ported units available through Festo Germany. Metric ported units with NPT ported connecting plates are available through North American Production Facility.											
●	Produced in Festo Germany only!											
-	Not an available Festo design or configurable option											

**Overview list - Service units MSB4/6 & MSB4/6N**

MSB CODE	ISO-G Porting					NPT Porting					Type	Description
	MSB4		MSB6			MSB4N		MSB6N				
	1/8	1/4	1/4	3/8	1/2	1/8	1/4	1/4	3/8	1/2		
Filter regulator MS-LFR (cont...)												
J45	☆	☆	☆	☆	☆	☆	☆	☆	☆	☆	MS-LFR-D7-CUM-AD1-AS	Pressure regulation range 0.5 ... 12 bar, grade of filtration 5 µm, metal bowl, manual condensate drain, pressure sensor with LCD display (plug M8, 1 switching output PNP, 3-pin), standard rotary knob with detent, lockable with accessories
J46	☆	☆	☆	☆	☆	☆	☆	☆	☆	☆	MS-LFR-D7-CUV-AD7-AS	Pressure regulation range 0.5 ... 12 bar, grade of filtration 5 µm, metal bowl, fully automatic condensate drain, pressure sensor with operational status indicator (plug M8, threshold value comparator, PNP, N/O contact), standard rotary knob with detent, lockable with accessories
J79	-	☆	-	-	☆	-	←	-	-	←	MS-LFR-D7-ERM-RG-AS	Pressure regulation range 0.5 ... 12 bar, grade of filtration 40 µm, plastic bowl guard, manual condensate drain, integrated MS pressure gauge with red-green scale with outer scale in bar and inner scale in psi, standard rotary knob with detent, lockable with accessories
J80	-	☆	-	-	☆	-	←	-	-	←	MS-LFR-D7-ERV-RG-AS	Pressure regulation range 0.5 ... 12 bar, grade of filtration 40 µm, plastic bowl guard, fully automatic condensate drain, integrated MS pressure gauge with red-green scale with outer scale in bar and inner scale in psi, standard rotary knob with detent, lockable with accessories
J81	-	☆	-	-	☆	-	←	-	-	←	MS-LFR-D7-CRM-RG-AS	Pressure regulation range 0.5 ... 12 bar, grade of filtration 5 µm, plastic bowl guard, manual condensate drain, integrated MS pressure gauge with red-green scale with outer scale in bar and inner scale in psi, standard rotary knob with detent, lockable with accessories
J82	-	☆	-	-	☆	-	←	-	-	←	MS-LFR-D7-CRV-RG-AS	Pressure regulation range 0.5 ... 12 bar, grade of filtration 5 µm, plastic bowl guard, fully automatic condensate drain, integrated MS pressure gauge with red-green scale with outer scale in bar and inner scale in psi, standard rotary knob with detent, lockable with accessories
J83	-	☆	-	-	☆	-	←	-	-	←	MS-LFR-D6-ERM-RG-AS	Pressure regulation range 0.3 ... 7 bar, grade of filtration 40 µm, plastic bowl guard, manual condensate drain, integrated MS pressure gauge with red-green scale with outer scale in bar and inner scale in psi, standard rotary knob with detent, lockable with accessories
J84	-	☆	-	-	☆	-	←	-	-	←	MS-LFR-D6-ERV-RG-AS	Pressure regulation range 0.3 ... 7 bar, grade of filtration 40 µm, plastic bowl guard, fully automatic condensate drain, integrated MS pressure gauge with red-green scale with outer scale in bar and inner scale in psi, standard rotary knob with detent, lockable with accessories
J85	-	☆	-	-	☆	-	←	-	-	←	MS-LFR-D6-CRM-RG-AS	Pressure regulation range 0.3 ... 7 bar, grade of filtration 5 µm, plastic bowl guard, manual condensate drain, integrated MS pressure gauge with red-green scale with outer scale in bar and inner scale in psi, standard rotary knob with detent, lockable with accessories
J86	-	☆	-	-	☆	-	←	-	-	←	MS-LFR-D6-CRV-RG-AS	Pressure regulation range 0.3 ... 7 bar, grade of filtration 5 µm, plastic bowl guard, fully automatic condensate drain, integrated MS pressure gauge with red-green scale with outer scale in bar and inner scale in psi, standard rotary knob with detent, lockable with accessories
J87	-	☆	-	-	☆	-	←	-	-	←	MS-LFR-D7-EUM-RG-AS	Pressure regulation range 0.5 ... 12 bar, grade of filtration 40 µm, metal bowl, manual condensate drain, integrated MS pressure gauge with red-green scale with outer scale in bar and inner scale in psi, standard rotary knob with detent, lockable with accessories
J88	-	☆	-	-	☆	-	←	-	-	←	MS-LFR-D7-EUV-RG-AS	Pressure regulation range 0.5 ... 12 bar, grade of filtration 40 µm, metal bowl, fully automatic condensate drain, integrated MS pressure gauge with red-green scale with outer scale in bar and inner scale in psi, standard rotary knob with detent, lockable with accessories
☆	Available and produced in North American Production Facility											
←	NPT ported units available through Festo Germany. Metric ported units with NPT ported connecting plates are available through North American Production Facility.											
●	Produced in Festo Germany only!											
-	Not an available Festo design or configurable option											

**Overview list - Service units MSB4/6 & MSB4/6N**

MSB CODE	ISO-G Porting					NPT Porting					Type	Description
	MSB4		MSB6			MSB4N		MSB6N				
	1/8	1/4	1/4	3/8	1/2	1/8	1/4	1/4	3/8	1/2		
Filter regulator MS-LFR (cont...)												
J89	-	☆	-	-	☆	-	←	-	-	←	MS-LFR-D7-CUM-RG-AS	Pressure regulation range 0.5 ... 12 bar, grade of filtration 5 µm, metal bowl, manual condensate drain, integrated MS pressure gauge with red-green scale with outer scale in bar and inner scale in psi, standard rotary knob with detent, lockable with accessories
J90	-	☆	-	-	☆	-	←	-	-	←	MS-LFR-D7-CUV-RG-AS	Pressure regulation range 0.5 ... 12 bar, grade of filtration 5 µm, metal bowl, fully automatic condensate drain, integrated MS pressure gauge with red-green scale with outer scale in bar and inner scale in psi, standard rotary knob with detent, lockable with accessories
J91	-	☆	-	-	-	-	←	-	-	-	MS-LFR-D7-ERM-A8-AS	Pressure regulation range 0.5 ... 12 bar, grade of filtration 40 µm, plastic bowl guard, manual condensate drain, adapter plate for G1/8 EN pressure gauge (without pressure gauge), standard rotary knob with detent, lockable with accessories
	-	-	-	-	☆	-	-	-	-	←	MS-LFR-D7-ERM-A4-AS	Pressure regulation range 0.5 ... 12 bar, grade of filtration 40 µm, plastic bowl guard, manual condensate drain, adapter plate for G1/4 EN pressure gauge (without pressure gauge), standard rotary knob with detent, lockable with accessories
J92	-	☆	-	-	-	-	←	-	-	-	MS-LFR-D7-ERV-A8-AS	Pressure regulation range 0.5 ... 12 bar, grade of filtration 40 µm, plastic bowl guard, fully automatic condensate drain, adapter plate for G1/8 EN pressure gauge (without pressure gauge), standard rotary knob with detent, lockable with accessories
	-	-	-	-	☆	-	-	-	-	←	MS-LFR-D7-ERV-A4-AS	Pressure regulation range 0.5 ... 12 bar, grade of filtration 40 µm, plastic bowl guard, fully automatic condensate drain, adapter plate for EN pressure gauge ¼ (without pressure gauge), standard rotary knob with detent, lockable with accessories
J93	-	☆	-	-	-	-	←	-	-	-	MS-LFR-D7-CRM-A8-AS	Pressure regulation range 0.5 ... 12 bar, grade of filtration 5 µm, plastic bowl guard, manual condensate drain, adapter plate for G1/8 EN pressure gauge (without pressure gauge), standard rotary knob with detent, lockable with accessories
	-	-	-	-	☆	-	-	-	-	←	MS-LFR-D7-CRM-A4-AS	Pressure regulation range 0.5 ... 12 bar, grade of filtration 5 µm, plastic bowl guard, manual condensate drain, adapter plate for G1/4 EN pressure gauge (without pressure gauge), standard rotary knob with detent, lockable with accessories
J94	-	☆	-	-	-	-	←	-	-	-	MS-LFR-D7-CRV-A8-AS	Pressure regulation range 0.5 ... 12 bar, grade of filtration 5 µm, plastic bowl guard, fully automatic condensate drain, adapter plate for G1/8 EN pressure gauge (without pressure gauge), standard rotary knob with detent, lockable with accessories
	-	-	-	-	☆	-	-	-	-	←	MS-LFR-D7-CRV-A4-AS	Pressure regulation range 0.5 ... 12 bar, grade of filtration 5 µm, plastic bowl guard, fully automatic condensate drain, adapter plate for G1/4 EN pressure gauge (without pressure gauge), standard rotary knob with detent, lockable with accessories
J95	-	☆	-	-	-	-	←	-	-	-	MS-LFR-D6-ERM-A8-AS	Pressure regulation range 0.3 ... 7 bar, grade of filtration 40 µm, plastic bowl guard, manual condensate drain, adapter plate for G1/8 EN pressure gauge (without pressure gauge), standard rotary knob with detent, lockable with accessories
	-	-	-	-	☆	-	-	-	-	←	MS-LFR-D6-ERM-A4-AS	Pressure regulation range 0.3 ... 7 bar, grade of filtration 40 µm, plastic bowl guard, manual condensate drain, adapter plate for G1/4 EN pressure gauge (without pressure gauge), standard rotary knob with detent, lockable with accessories
J96	-	☆	-	-	-	-	←	-	-	-	MS-LFR-D6-ERV-A8-AS	Pressure regulation range 0.3 ... 7 bar, grade of filtration 40 µm, plastic bowl guard, fully automatic condensate drain, adapter plate for G1/8 EN pressure gauge (without pressure gauge), standard rotary knob with detent, lockable with accessories
	-	-	-	-	☆	-	-	-	-	←	MS-LFR-D6-ERV-A4-AS	Pressure regulation range 0.3 ... 7 bar, grade of filtration 40 µm, plastic bowl guard, fully automatic condensate drain, adapter plate for G1/4 EN pressure gauge (without pressure gauge), standard rotary knob with detent, lockable with accessories
☆	Available and produced in North American Production Facility											
←	NPT ported units available through Festo Germany. Metric ported units with NPT ported connecting plates are available through North American Production Facility.											
●	Produced in Festo Germany only!											
-	Not an available Festo design or configurable option											

**Overview list - Service units MSB4/6 & MSB4/6N**

MSB CODE	ISO-G Porting					NPT Porting					Type	Description
	MSB4		MSB6			MSB4N		MSB6N				
	1/8	1/4	1/4	3/8	1/2	1/8	1/4	1/4	3/8	1/2		
Filter regulator MS-LFR (cont...)												
J97	-	☆	-	-	-	-	←	-	-	-	MS-LFR-D6-CRM-A8-AS	Pressure regulation range 0.3 ... 7 bar, grade of filtration 5 µm, plastic bowl guard, manual condensate drain, adapter plate for G1/8 EN pressure gauge (without pressure gauge), standard rotary knob with detent, lockable with accessories
	-	-	-	-	☆	-	-	-	-	←	MS-LFR-D6-CRM-A4-AS	Pressure regulation range 0.3 ... 7 bar, grade of filtration 5 µm, plastic bowl guard, manual condensate drain, adapter plate for G1/4 EN pressure gauge (without pressure gauge), standard rotary knob with detent, lockable with accessories
J98	-	☆	-	-	-	-	←	-	-	-	MS-LFR-D6-CRV-A8-AS	Pressure regulation range 0.3 ... 7 bar, grade of filtration 5 µm, plastic bowl guard, fully automatic condensate drain, adapter plate for G1/8 EN pressure gauge (without pressure gauge), standard rotary knob with detent, lockable with accessories
	-	-	-	-	☆	-	-	-	-	←	MS-LFR-D6-CRV-A4-AS	Pressure regulation range 0.3 ... 7 bar, grade of filtration 5 µm, plastic bowl guard, fully automatic condensate drain, adapter plate for G1/4 EN pressure gauge (without pressure gauge), standard rotary knob with detent, lockable with accessories
J99	-	☆	-	-	-	-	←	-	-	-	MS-LFR-D7-EUM-A8-AS	Pressure regulation range 0.5 ... 12 bar, grade of filtration 40 µm, metal bowl, manual condensate drain, adapter plate for G1/8 EN pressure gauge (without pressure gauge), standard rotary knob with detent, lockable with accessories
	-	-	-	-	☆	-	-	-	-	←	MS-LFR-D7-EUM-A4-AS	Pressure regulation range 0.5 ... 12 bar, grade of filtration 40 µm, metal bowl, manual condensate drain, adapter plate for G1/4 EN pressure gauge (without pressure gauge), standard rotary knob with detent, lockable with accessories
J100	-	☆	-	-	-	-	←	-	-	-	MS-LFR-D7-EUV-A8-AS	Pressure regulation range 0.5 ... 12 bar, grade of filtration 40 µm, metal bowl, fully automatic condensate drain, adapter plate for G1/8 EN pressure gauge (without pressure gauge), standard rotary knob with detent, lockable with accessories
	-	-	-	-	☆	-	-	-	-	←	MS-LFR-D7-EUV-A4-AS	Pressure regulation range 0.5 ... 12 bar, grade of filtration 40 µm, metal bowl, fully automatic condensate drain, adapter plate for G1/4 EN pressure gauge (without pressure gauge), standard rotary knob with detent, lockable with accessories
J101	-	☆	-	-	-	-	←	-	-	-	MS-LFR-D7-CUM-A8-AS	Pressure regulation range 0.5 ... 12 bar, grade of filtration 5 µm, metal bowl, manual condensate drain, adapter plate for G1/8 EN pressure gauge (without pressure gauge), standard rotary knob with detent, lockable with accessories
	-	-	-	-	☆	-	-	-	-	←	MS-LFR-D7-CUM-A4-AS	Pressure regulation range 0.5 ... 12 bar, grade of filtration 5 µm, metal bowl, manual condensate drain, adapter plate for G1/4 EN pressure gauge (without pressure gauge), standard rotary knob with detent, lockable with accessories
J102	-	☆	-	-	-	-	←	-	-	-	MS-LFR-D7-CUV-A8-AS	Pressure regulation range 0.5 ... 12 bar, grade of filtration 5 µm, metal bowl, fully automatic condensate drain, adapter plate for G1/8 EN pressure gauge (without pressure gauge), standard rotary knob with detent, lockable with accessories
	-	-	-	-	☆	-	-	-	-	←	MS-LFR-D7-CUV-A4-AS	Pressure regulation range 0.5 ... 12 bar, grade of filtration 5 µm, metal bowl, fully automatic condensate drain, adapter plate for G1/4 EN pressure gauge (without pressure gauge), standard rotary knob with detent, lockable with accessories
J119	-	☆	-	-	☆	-	←	-	-	←	MS-LFR-D6-CRV-MPA-AS	Pressure regulation range 0.3 ... 7 bar, grade of filtration 5 µm, plastic bowl guard, fully automatic condensate drain, integrated MS pressure gauge with outer scale in MPa, standard rotary knob with detent, lockable with accessories
J120	-	☆	-	-	☆	-	←	-	-	←	MS-LFR-D6-ERM-MPA-AS	Pressure regulation range 0.3 ... 7 bar, grade of filtration 40 µm, plastic bowl guard, manual condensate drain, integrated MS pressure gauge with outer scale in MPa, standard rotary knob with detent, lockable with accessories
☆	Available and produced in North American Production Facility											
←	NPT ported units available through Festo Germany. Metric ported units with NPT ported connecting plates are available through North American Production Facility.											
●	Produced in Festo Germany only!											
-	Not an available Festo design or configurable option											



**Overview list - Service units MSB4/6 & MSB4/6N**

MSB CODE	ISO-G Porting					NPT Porting					Type	Description
	MSB4		MSB6			MSB4N		MSB6N				
	1/8	1/4	1/4	3/8	1/2	1/8	1/4	1/4	3/8	1/2		
<b>Filter regulator MS-LFR (cont...)</b>												
J121	-	★	-	-	★	-	←	-	-	←	MS-LFR-D6-ERV-MPA-AS	Pressure regulation range 0.3 ... 7 bar, grade of filtration 40 µm, plastic bowl guard, fully automatic condensate drain, integrated MS pressure gauge with outer scale in MPa, standard rotary knob with detent, lockable with accessories
J124	-	★	-	-	★	-	←	-	-	←	MS-LFR-D6-CRM-MPA-AS	Pressure regulation range 0.3 ... 7 bar, grade of filtration 5 µm, plastic bowl guard, manual condensate drain, integrated MS pressure gauge with outer scale in MPa, standard rotary knob with detent, lockable with accessories
<b>Activated carbon filter MS-LFX</b>												
L1	★	★	★	★	★	★	★	★	★	★	MS-LFX-R	Plastic bowl guard
L2	★	★	★	★	★	★	★	★	★	★	MS-LFX-U	Metal bowl
L3	-	-	●	●	●	-	-	●	●	●	MS-LFX-U-HF	Metal bowl, high flow rate
L4	-	-	-	-	●	-	-	-	-	●	MS-LFX-R-HP	Plastic bowl guard, low flow rate suitable for sealing air and cleaning air
<b>Lubricator MS-LOE</b>												
M1	★	★	★	★	★	★	★	★	★	★	MS-LOE-R	Plastic bowl guard
M2	★	★	★	★	★	★	★	★	★	★	MS-LOE-U	Metal bowl
<b>Pressure regulator MS-LR</b>												
N1	★	★	★	★	★	←	★	←	←	★	MS-LR-D5-AS	Pressure regulation range 0.3 ... 4 bar, integrated MS pressure gauge with outer scale in bar and inner scale in psi, standard rotary knob with detent, lockable with accessories
N2	★	★	★	★	★	★	★	★	★	★	MS-LR-D6-AS	Pressure regulation range 0.3 ... 7 bar, integrated MS pressure gauge with outer scale in bar and inner scale in psi, standard rotary knob with detent, lockable with accessories
N3	★	★	★	★	★	★	★	★	★	★	MS-LR-D7-AS	Pressure regulation range 0.5 ... 12 bar, integrated MS pressure gauge with outer scale in bar and inner scale in psi, standard rotary knob with detent, lockable with accessories
N4	★	★	★	★	★	←	★	←	←	★	MS-LR-D5-AD1-AS	Pressure regulation range 0.3 ... 4 bar, pressure sensor with LCD display (plug M8, 1 switching output PNP, 3-pin), standard rotary knob with detent, lockable with accessories
N5	★	★	★	★	★	★	★	★	★	★	MS-LR-D6-AD1-AS	Pressure regulation range 0.3 ... 7 bar, pressure sensor with LCD display (plug M8, 1 switching output PNP, 3-pin), standard rotary knob with detent, lockable with accessories
N6	★	★	★	★	★	★	★	★	★	★	MS-LR-D7-AD1-AS	Pressure regulation range 0.5 ... 12 bar, pressure sensor with LCD display (plug M8, 1 switching output PNP, 3-pin), standard rotary knob with detent, lockable with accessories
N7	★	★	★	★	★	←	★	←	←	★	MS-LR-D5-KD-AS	Pressure regulation range 0.3 ... 4 bar, integrated MS pressure gauge with outer scale in bar and inner scale in psi, rotary knob underneath, standard rotary knob with detent, lockable with accessories
N8	★	★	★	★	★	★	★	★	★	★	MS-LR-D6-KD-AS	Pressure regulation range 0.3 ... 7 bar, integrated MS pressure gauge with outer scale in bar and inner scale in psi, rotary knob underneath, standard rotary knob with detent, lockable with accessories
N9	★	★	★	★	★	★	★	★	★	★	MS-LR-D7-KD-AS	Pressure regulation range 0.5 ... 12 bar, integrated MS pressure gauge with outer scale in bar and inner scale in psi, rotary knob underneath, standard rotary knob with detent, lockable with accessories
N10	★	★	★	★	★	←	★	←	←	★	MS-LR-D5-AD1-KD-AS	Pressure regulation range 0.3 ... 4 bar, pressure sensor with LCD display (plug M8, 1 switching output PNP, 3-pin), rotary knob underneath, standard rotary knob with detent, lockable with accessories
N11	★	★	★	★	★	★	★	★	★	★	MS-LR-D6-AD1-KD-AS	Pressure regulation range 0.3 ... 7 bar, pressure sensor with LCD display (plug M8, 1 switching output PNP, 3-pin), rotary knob underneath, standard rotary knob with detent, lockable with accessories
N12	★	★	★	★	★	★	★	★	★	★	MS-LR-D7-AD1-KD-AS	Pressure regulation range 0.5 ... 12 bar, pressure sensor with LCD display (plug M8, 1 switching output PNP, 3-pin), rotary knob underneath, standard rotary knob with detent, lockable with accessories
★	Available and produced in North American Production Facility											
←	NPT ported units available through Festo Germany. Metric ported units with NPT ported connecting plates are available through North American Production Facility.											
●	Produced in Festo Germany only!											
-	Not an available Festo design or configurable option											

**Overview list - Service units MSB4/6 & MSB4/6N**

MSB CODE	ISO-G Porting					NPT Porting					Type	Description
	MSB4		MSB6			MSB4N		MSB6N				
	1/8	1/4	1/4	3/8	1/2	1/8	1/4	1/4	3/8	1/2		
Pressure regulator MS-LR (cont...)												
N19	☆	☆	☆	☆	☆	←	☆	←	←	☆	MS-LR-D5-AD7-AS	Pressure regulation range 0.3 ... 4 bar, pressure sensor with operational status indicator (plug M8, threshold value comparator, PNP, N/O contact), standard rotary knob with detent, lockable with accessories
N20	☆	☆	☆	☆	☆	☆	☆	☆	☆	☆	MS-LR-D6-AD7-AS	Pressure regulation range 0.3 ... 7 bar, pressure sensor with operational status indicator (plug M8, threshold value comparator, PNP, N/O contact), standard rotary knob with detent, lockable with accessories
N21	☆	☆	☆	☆	☆	☆	☆	☆	☆	☆	MS-LR-D7-AD7-AS	Pressure regulation range 0.5 ... 12 bar, pressure sensor with operational status indicator (plug M8, threshold value comparator, PNP, N/O contact), standard rotary knob with detent, lockable with accessories
N22	☆	☆	☆	☆	☆	←	☆	←	←	☆	MS-LR-D5-AD7-KD-AS	Pressure regulation range 0.3 ... 4 bar, pressure sensor with operational status indicator (plug M8, threshold value comparator, PNP, N/O contact), rotary knob underneath, standard rotary knob with detent, lockable with accessories
N23	☆	☆	☆	☆	☆	☆	☆	☆	☆	☆	MS-LR-D6-AD7-KD-AS	Pressure regulation range 0.3 ... 7 bar, pressure sensor with operational status indicator (plug M8, threshold value comparator, PNP, N/O contact), rotary knob underneath, standard rotary knob with detent, lockable with accessories
N24	☆	☆	☆	☆	☆	☆	☆	☆	☆	☆	MS-LR-D7-AD7-KD-AS	Pressure regulation range 0.5 ... 12 bar, pressure sensor with operational status indicator (plug M8, threshold value comparator, PNP, N/O contact), rotary knob underneath, standard rotary knob with detent, lockable with accessories
N28	-	-	●	●	●	-	-	●	●	●	MS-LR-D5-VS-DM2	Pressure regulation range 0.3 ... 4 bar, cover plate, large rotary knob pressure gauge
N29	-	-	●	●	●	-	-	●	●	●	MS-LR-D6-VS-DM2	Pressure regulation range 0.3 ... 7 bar, cover plate, large rotary knob pressure gauge
N30	-	-	●	●	●	-	-	●	●	●	MS-LR-D7-VS-DM2	Pressure regulation range 0.5 ... 12 bar, cover plate, large rotary knob pressure gauge
N31	☆	☆	-	-	-	●	●	-	-	-	MS-LR-D5-VS-DM1	Pressure regulation range 0.3 ... 4 bar, cover plate, small rotary knob pressure gauge
N32	☆	☆	-	-	-	●	●	-	-	-	MS-LR-D6-VS-DM1	Pressure regulation range 0.3 ... 7 bar, cover plate, small rotary knob pressure gauge
N33	☆	☆	-	-	-	●	●	-	-	-	MS-LR-D7-VS-DM1	Pressure regulation range 0.5 ... 12 bar, cover plate, small rotary knob pressure gauge
N47	-	☆	-	-	☆	-	←	-	-	←	MS-LR-D5-RG-AS	Pressure regulation range 0.3 ... 4 bar, integrated MS pressure gauge with red-green scale with outer scale in bar and inner scale in psi, standard rotary knob with detent, lockable with accessories
N48	-	☆	-	-	☆	-	←	-	-	←	MS-LR-D6-RG-AS	Pressure regulation range 0.3 ... 7 bar, integrated MS pressure gauge with red-green scale with outer scale in bar and inner scale in psi, standard rotary knob with detent, lockable with accessories
N49	-	☆	-	-	☆	-	←	-	-	←	MS-LR-D7-RG-AS	Pressure regulation range 0.5 ... 12 bar, integrated MS pressure gauge with red-green scale with outer scale in bar and inner scale in psi, standard rotary knob with detent, lockable with accessories
N50	-	☆	-	-	-	-	←	-	-	-	MS-LR-D5-A8-AS	Pressure regulation range 0.3 ... 4 bar, adapter plate for G1/8 EN pressure gauge (without pressure gauge), standard rotary knob with detent, lockable with accessories
	-	-	-	-	☆	-	-	-	-	←	MS-LR-D5-A4-AS	Pressure regulation range 0.3 ... 4 bar, adapter plate for G1/4 EN pressure gauge (without pressure gauge), standard rotary knob with detent, lockable with accessories
N51	-	☆	-	-	-	-	←	-	-	-	MS-LR-D6-A8-AS	Pressure regulation range 0.3 ... 7 bar, adapter plate for G1/8 EN pressure gauge (without pressure gauge), standard rotary knob with detent, lockable with accessories
	-	-	-	-	☆	-	-	-	-	←	MS-LR-D6-A4-AS	Pressure regulation range 0.3 ... 7 bar, adapter plate for G1/4 EN pressure gauge (without pressure gauge), standard rotary knob with detent, lockable with accessories
☆	Available and produced in North American Production Facility											
←	NPT ported units available through Festo Germany. Metric ported units with NPT ported connecting plates are available through North American Production Facility.											
●	Produced in Festo Germany only!											
-	Not an available Festo design or configurable option											

**Overview list - Service units MSB4/6 & MSB4/6N**

MSB CODE	ISO-G Porting					NPT Porting					Type	Description
	MSB4		MSB6			MSB4N		MSB6N				
	1/8	1/4	1/4	3/8	1/2	1/8	1/4	1/4	3/8	1/2		
Pressure regulator MS-LR (cont...)												
N52	-	☆	-	-	-	-	←	-	-	-	MS-LR-D7-A8-AS	Pressure regulation range 0.5 ... 12 bar, adapter plate for G1/8 EN pressure gauge (without pressure gauge), standard rotary knob with detent, lockable with accessories
	-	-	-	-	☆	-	-	-	-	←	MS-LR-D7-A4-AS	Pressure regulation range 0.5 ... 12 bar, adapter plate for G1/4 EN pressure gauge (without pressure gauge), standard rotary knob with detent, lockable with accessories
N59	☆	☆	☆	☆	☆	←	←	←	←	←	MS-LR-D5-MPA-AS	Pressure regulation range 0.3 ... 4 bar, integrated MS pressure gauge with outer scale in MPa, standard rotary knob with detent, lockable with accessories
N60	☆	☆	☆	☆	☆	←	←	←	←	←	MS-LR-D6-MPA-AS	Pressure regulation range 0.3 ... 7 bar, integrated MS pressure gauge with outer scale in MPa, standard rotary knob with detent, lockable with accessories
Pressure regulator MS-LRB												
O1	-	☆	-	-	☆	-	☆	-	-	←	MS-LRB-D5-AS	Pressure regulation range 0.3 ... 4 bar, integrated MS pressure gauge with outer scale in bar and inner scale in psi, standard rotary knob with detent, lockable with accessories, pressure output to rear/ front without angled outlet block
O2	-	☆	-	-	☆	-	☆	-	-	☆	MS-LRB-D6-AS	Pressure regulation range 0.3 ... 7 bar, integrated MS pressure gauge with outer scale in bar and inner scale in psi, standard rotary knob with detent, lockable with accessories, pressure output to rear/ front without angled outlet block
O3	-	☆	-	-	●	-	←	-	-	●	MS-LRB-D7-AS	Pressure regulation range 0.5 ... 12 bar, integrated MS pressure gauge with outer scale in bar and inner scale in psi, standard rotary knob with detent, lockable with accessories, pressure output to rear/front without angled outlet block
O4	-	☆	-	-	☆	-	☆	-	-	←	MS-LRB-D5-AS-BD	Pressure regulation range 0.3 ... 4 bar, integrated MS pressure gauge with outer scale in bar and inner scale in psi, standard rotary knob with detent, lockable with accessories, pressure output to rear/ front with angled outlet block QS-8
O5	-	☆	-	-	☆	-	☆	-	-	☆	MS-LRB-D6-AS-BD	Pressure regulation range 0.3 ... 7 bar, integrated MS pressure gauge with outer scale in bar and inner scale in psi, standard rotary knob with detent, lockable with accessories, pressure output to rear/ front with angled outlet block QS-8
O6	-	☆	-	-	●	-	←	-	-	●	MS-LRB-D7-AS-BD	Pressure regulation range 0.5 ... 12 bar, integrated MS pressure gauge with outer scale in bar and inner scale in psi, standard rotary knob with detent, lockable with accessories, pressure output to rear/front with angled outlet block QS-8
O7	-	☆	-	-	-	-	←	-	-	-	MS-LRB-D5-A8-AS	Pressure regulation range 0.3 ... 4 bar, adapter plate for G1/8 EN pressure gauge (without pressure gauge), standard rotary knob with detent, lockable with accessories, pressure output to rear/front without angled outlet block
	-	-	-	-	☆	-	-	-	-	←	MS-LRB-D5-A4-AS	Pressure regulation range 0.3 ... 4 bar, adapter plate for G1/4 EN pressure gauge (without pressure gauge), standard rotary knob with detent, lockable with accessories, pressure output to rear/front without angled outlet block
O8	-	☆	-	-	-	-	←	-	-	-	MS-LRB-D6-A8-AS	Pressure regulation range 0.3 ... 7 bar, adapter plate for G1/8 EN pressure gauge (without pressure gauge), standard rotary knob with detent, lockable with accessories, pressure output to rear/front without angled outlet block
	-	-	-	-	☆	-	-	-	-	←	MS-LRB-D6-A4-AS	Pressure regulation range 0.3 ... 7 bar, adapter plate for G1/4 EN pressure gauge (without pressure gauge), standard rotary knob with detent, lockable with accessories, pressure output to rear/front without angled outlet block
☆	Available and produced in North American Production Facility											
←	NPT ported units available through Festo Germany. Metric ported units with NPT ported connecting plates are available through North American Production Facility.											
●	Produced in Festo Germany only!											
-	Not an available Festo design or configurable option											

**Overview list - Service units MSB4/6 & MSB4/6N**

MSB CODE	ISO-G Porting					NPT Porting					Type	Description
	MSB4		MSB6			MSB4N		MSB6N				
	1/8	1/4	1/4	3/8	1/2	1/8	1/4	1/4	3/8	1/2		
Pressure regulator MS-LRB												
09	-	☆	-	-	-	-	←	-	-	-	MS-LRB-D7-A8-AS	Pressure regulation range 0.5 ... 12 bar, adapter plate for G1/8 EN pressure gauge (without pressure gauge), standard rotary knob with detent, lockable with accessories, pressure output to rear/front without angled outlet block
	-	-	-	-	☆	-	-	-	-	←	MS-LRB-D7-A4-AS	Pressure regulation range 0.5 ... 12 bar, adapter plate for G1/4 EN pressure gauge (without pressure gauge), standard rotary knob with detent, lockable with accessories, pressure output to rear/front without angled outlet block
010	-	☆	-	-	☆	-	☆	-	-	←	MS-LRB-D5-AD1-AS	Pressure regulation range 0.3 ... 4 bar, pressure sensor with LCD display (plug M8, 1 switching output PNP, 3-pin), standard rotary knob with detent, lockable with accessories, pressure output to rear/ front without angled outlet block
011	-	☆	-	-	☆	-	☆	-	-	☆	MS-LRB-D6-AD1-AS	Pressure regulation range 0.3 ... 7 bar, pressure sensor with LCD display (plug M8, 1 switching output PNP, 3-pin), standard rotary knob with detent, lockable with accessories, pressure output to rear/ front without angled outlet block
012	-	☆	-	-	●	-	←	-	-	●	MS-LRB-D7-AD1-AS	Pressure regulation range 0.5 ... 12 bar, pressure sensor with LCD display (plug M8, 1 switching output PNP, 3-pin), standard rotary knob with detent, lockable with accessories, pressure output to rear/front without angled outlet block
013	-	☆	-	-	☆	-	☆	-	-	←	MS-LRB-D5-AD1-AS-BD	Pressure regulation range 0.3 ... 4 bar, pressure sensor with LCD display (plug M8, 1 switching output PNP, 3-pin), standard rotary knob with detent, lockable with accessories, pressure output to rear/ front with angled outlet block QS-8
014	-	☆	-	-	☆	-	☆	-	-	☆	MS-LRB-D6-AD1-AS-BD	Pressure regulation range 0.3 ... 7 bar, pressure sensor with LCD display (plug M8, 1 switching output PNP, 3-pin), standard rotary knob with detent, lockable with accessories, pressure output to rear/ front with angled outlet block QS-8
015	-	☆	-	-	●	-	←	-	-	●	MS-LRB-D7-AD1-AS-BD	Pressure regulation range 0.5 ... 12 bar, pressure sensor with LCD display (plug M8, 1 switching output PNP, 3-pin), standard rotary knob with detent, lockable with accessories, pressure output to rear/front with angled outlet block QS-8
016	-	☆	-	-	☆	-	☆	-	-	←	MS-LRB-D5-VS-KD-AS	Pressure regulation range 0.3 ... 4 bar, cover plate, rotary knob underneath, standard rotary knob with detent, lockable with accessories, pressure output to rear/front without angled outlet block
017	-	☆	-	-	☆	-	☆	-	-	☆	MS-LRB-D6-VS-KD-AS	Pressure regulation range 0.3 ... 7 bar, cover plate, rotary knob underneath, standard rotary knob with detent, lockable with accessories, pressure output to rear/front without angled outlet block
018	-	☆	-	-	●	-	←	-	-	●	MS-LRB-D7-VS-KD-AS	Pressure regulation range 0.5 ... 12 bar, cover plate, rotary knob underneath, standard rotary knob with detent, lockable with accessories, pressure output to rear/front without angled outlet block
019	-	☆	-	-	☆	-	☆	-	-	←	MS-LRB-D5-KD-AS-BD	Pressure regulation range 0.3 ... 4 bar, integrated MS pressure gauge with outer scale in bar and inner scale in psi, rotary knob underneath, standard rotary knob with detent, lockable with accessories, pressure output to rear/front with angled outlet block QS-8
020	-	☆	-	-	☆	-	☆	-	-	☆	MS-LRB-D6-KD-AS-BD	Pressure regulation range 0.3 ... 7 bar, integrated MS pressure gauge with outer scale in bar and inner scale in psi, rotary knob underneath, standard rotary knob with detent, lockable with accessories, pressure output to rear/front with angled outlet block QS-8
021	-	☆	-	-	●	-	←	-	-	●	MS-LRB-D7-KD-AS-BD	Pressure regulation range 0.5 ... 12 bar, integrated MS pressure gauge with outer scale in bar and inner scale in psi, rotary knob underneath, standard rotary knob with detent, lockable with accessories, pressure output to rear/front with angled outlet block QS-8
022	-	☆	-	-	☆	-	☆	-	-	←	MS-LRB-D5-AD7-AS	Pressure regulation range 0.3 ... 4 bar, pressure sensor with operational status indicator (plug M8, threshold value comparator, PNP, N/O contact), standard rotary knob with detent, lockable with accessories, pressure output to rear/front without angled outlet block
☆	Available and produced in North American Production Facility											
←	NPT ported units available through Festo Germany. Metric ported units with NPT ported connecting plates are available through North American Production Facility.											
●	Produced in Festo Germany only!											
-	Not an available Festo design or configurable option											

**Overview list - Service units MSB4/6 & MSB4/6N**

MSB CODE	ISO-G Porting					NPT Porting					Type	Description
	MSB4		MSB6			MSB4N		MSB6N				
	1/8	1/4	1/4	3/8	1/2	1/8	1/4	1/4	3/8	1/2		
Pressure regulator MS-LRB												
023	-	☆	-	-	☆	-	☆	-	-	☆	MS-LRB-D6-AD7-AS	Pressure regulation range 0.3 ... 7 bar, pressure sensor with operational status indicator (plug M8, threshold value comparator, PNP, N/O contact), standard rotary knob with detent, lockable with accessories, pressure output to rear/front without angled outlet block
024	-	☆	-	-	●	-	←	-	-	●	MS-LRB-D7-AD7-AS	Pressure regulation range 0.5 ... 12 bar, pressure sensor with operational status indicator (plug M8, threshold value comparator, PNP, N/O contact), standard rotary knob with detent, lockable with accessories, pressure output to rear/front without angled outlet block
025	-	☆	-	-	☆	-	☆	-	-	←	MS-LRB-D5-AD7-AS-BD	Pressure regulation range 0.3 ... 4 bar, pressure sensor with operational status indicator (plug M8, threshold value comparator, PNP, N/O contact), standard rotary knob with detent, lockable with accessories, pressure output to rear/front with angled outlet block QS-8
026	-	☆	-	-	☆	-	☆	-	-	☆	MS-LRB-D6-AD7-AS-BD	Pressure regulation range 0.3 ... 7 bar, pressure sensor with operational status indicator (plug M8, threshold value comparator, PNP, N/O contact), standard rotary knob with detent, lockable with accessories, pressure output to rear/front with angled outlet block QS-8
027	-	☆	-	-	●	-	←	-	-	●	MS-LRB-D7-AD7-AS-BD	Pressure regulation range 0.5 ... 12 bar, pressure sensor with operational status indicator (plug M8, threshold value comparator, PNP, N/O contact), standard rotary knob with detent, lockable with accessories, pressure output to rear/front with angled outlet block QS-8
028	-	-	-	-	●	-	-	-	-	●	MS-LRB-D5-VS-DM2	Pressure regulation range 0.3 ... 4 bar, cover plate, large rotary knob pressure gauge, pressure output to rear/front without angled outlet block
029	-	-	-	-	●	-	-	-	-	●	MS-LRB-D6-VS-DM2	Pressure regulation range 0.3 ... 7 bar, cover plate, large rotary knob pressure gauge, pressure output to rear/front without angled outlet block
030	-	-	-	-	●	-	-	-	-	●	MS-LRB-D7-VS-DM2	Pressure regulation range 0.5 ... 12 bar, cover plate, large rotary knob pressure gauge, pressure output to rear/front without angled outlet block
031	-	●	-	-	-	-	●	-	-	-	MS-LRB-D5-VS-DM1	Pressure regulation range 0.3 ... 4 bar, cover plate, small rotary knob pressure gauge, pressure output to rear/front without angled outlet block
032	-	●	-	-	-	-	●	-	-	-	MS-LRB-D6-VS-DM1	Pressure regulation range 0.3 ... 7 bar, cover plate, small rotary knob pressure gauge, pressure output to rear/front without angled outlet block
033	-	●	-	-	-	-	●	-	-	-	MS-LRB-D7-VS-DM1	Pressure regulation range 0.5 ... 12 bar, cover plate, small rotary knob pressure gauge, pressure output to rear/front without angled outlet block
034	-	☆	-	-	☆	-	←	-	-	←	MS-LRB-D5-RG-AS	Pressure regulation range 0.3 ... 4 bar, integrated MS pressure gauge with red-green scale with outer scale in bar and inner scale in psi, standard rotary knob with detent, lockable with accessories, pressure output to rear/front without angled outlet block
035	-	☆	-	-	☆	-	←	-	-	←	MS-LRB-D6-RG-AS	Pressure regulation range 0.3 ... 7 bar, integrated MS pressure gauge with red-green scale with outer scale in bar and inner scale in psi, standard rotary knob with detent, lockable with accessories, pressure output to rear/front without angled outlet block
036	-	☆	-	-	☆	-	←	-	-	←	MS-LRB-D7-RG-AS	Pressure regulation range 0.5 ... 12 bar, integrated MS pressure gauge with red-green scale with outer scale in bar and inner scale in psi, standard rotary knob with detent, lockable with accessories, pressure output to rear/front without angled outlet block
037	-	☆	-	-	☆	-	←	-	-	←	MS-LRB-D5-RG-AS-BD	Pressure regulation range 0.3 ... 4 bar, integrated MS pressure gauge with red-green scale with outer scale in bar and inner scale in psi, standard rotary knob with detent, lockable with accessories, pressure output to rear/front with angled outlet block QS-8
038	-	☆	-	-	☆	-	←	-	-	←	MS-LRB-D6-RG-AS-BD	Pressure regulation range 0.3 ... 7 bar, integrated MS pressure gauge with red-green scale with outer scale in bar and inner scale in psi, standard rotary knob with detent, lockable with accessories, pressure output to rear/front with angled outlet block QS-8
☆	Available and produced in North American Production Facility											
←	NPT ported units available through Festo Germany. Metric ported units with NPT ported connecting plates are available through North American Production Facility.											
●	Produced in Festo Germany only!											
-	Not an available Festo design or configurable option											

**Overview list - Service units MSB4/6 & MSB4/6N**

MSB CODE	ISO-G Porting					NPT Porting					Type	Description
	MSB4		MSB6			MSB4N		MSB6N				
	1/8	1/4	1/4	3/8	1/2	1/8	1/4	1/4	3/8	1/2		
<b>Pressure regulator MS-LRB</b>												
O39	-	★	-	-	★	-	←	-	-	←	MS-LRB-D7-RG-AS-BD	Pressure regulation range 0.5 ... 12 bar, integrated MS pressure gauge with red-green scale with outer scale in bar and inner scale in psi, standard rotary knob with detent, lockable with accessories, pressure output to rear/front with angled outlet block QS-8
O40	-	★	-	-	★	-	←	-	-	←	MS-LRB-D5-MPA-AS	Pressure regulation range 0.3 ... 4 bar, integrated MS pressure gauge with outer scale in MPa, standard rotary knob with detent, lockable with accessories, pressure output to rear/front without angled outlet block
O41	-	★	-	-	★	-	←	-	-	←	MS-LRB-D6-MPA-AS	Pressure regulation range 0.3 ... 7 bar, integrated MS pressure gauge with outer scale in MPa, standard rotary knob with detent, lockable with accessories, pressure output to rear/front without angled outlet block
<b>Precision pressure regulator MS-LRP</b>												
P1	-	-	★	★	★	-	-	★	★	★	MS-LRP-D2-A8	Pressure regulation range 0.05 ... 0.7 bar, adapter plate for G1/8 EN pressure gauge (without pressure gauge), standard rotary knob with detent
P2	-	-	★	★	★	-	-	★	★	★	MS-LRP-D4-A8	Pressure regulation range 0.05 ... 2.5 bar, adapter plate for G1/8 EN pressure gauge (without pressure gauge), standard rotary knob with detent
P3	-	-	★	★	★	-	-	★	★	★	MS-LRP-D5-A8	Pressure regulation range 0.1 ... 4 bar, adapter plate for G1/8 EN pressure gauge (without pressure gauge), standard rotary knob with detent
P4	-	-	★	★	★	-	-	★	★	★	MS-LRP-D7-A8	Pressure regulation range 0.1 ... 12 bar, adapter plate for G1/8 EN pressure gauge (without pressure gauge), standard rotary knob with detent
<b>Precision pressure regulator MS-LRPB</b>												
R1	-	-	-	-	●	-	-	-	-	●	MS-LRPB-D2-A8	Pressure regulation range 0.05 ... 0.7 bar, adapter plate for G1/8 EN pressure gauge (without pressure gauge), standard rotary knob with detent, pressure output to rear/front without angled outlet block
R2	-	-	-	-	●	-	-	-	-	●	MS-LRPB-D4-A8	Pressure regulation range 0.05 ... 2.5 bar, adapter plate for G1/8 EN pressure gauge (without pressure gauge), standard rotary knob with detent, pressure output to rear/front without angled outlet block
R3	-	-	-	-	●	-	-	-	-	●	MS-LRPB-D5-A8	Pressure regulation range 0.1 ... 4 bar, adapter plate for G1/8 EN pressure gauge (without pressure gauge), standard rotary knob with detent, pressure output to rear/front without angled outlet block
R4	-	-	-	-	●	-	-	-	-	●	MS-LRPB-D7-A8	Pressure regulation range 0.1 ... 12 bar, adapter plate for G1/8 EN pressure gauge (without pressure gauge), standard rotary knob with detent, pressure output to rear/front without angled outlet block
R5	-	-	-	-	●	-	-	-	-	●	MS-LRPB-D2-A8-BD	Pressure regulation range 0.05 ... 0.7 bar, adapter plate for G1/8 EN pressure gauge (without pressure gauge), standard rotary knob with detent, pressure output to rear/front with angled outlet block QS-8
R6	-	-	-	-	●	-	-	-	-	●	MS-LRPB-D4-A8-BD	Pressure regulation range 0.05 ... 2.5 bar, adapter plate for G1/8 EN pressure gauge (without pressure gauge), standard rotary knob with detent, pressure output to rear/front with angled outlet block QS-8
R7	-	-	-	-	●	-	-	-	-	●	MS-LRPB-D5-A8-BD	Pressure regulation range 0.1 ... 4 bar, adapter plate for G1/8 EN pressure gauge (without pressure gauge), standard rotary knob with detent, pressure output to rear/front with angled outlet block QS-8
R8	-	-	-	-	●	-	-	-	-	●	MS-LRPB-D7-A8-BD	Pressure regulation range 0.1 ... 12 bar, adapter plate for G1/8 EN pressure gauge (without pressure gauge), standard rotary knob with detent, pressure output to rear/front with angled outlet block QS-8
R9	-	-	-	-	●	-	-	-	-	●	MS-LRPB-D2-A8-BE	"Pressure regulation range 0.05 ... 0.7 bar, adapter plate for G1/8 EN pressure gauge (without pressure gauge), standard rotary knob with detent, pressure output to rear/front with angled outlet block QS-10"
R10	-	-	-	-	●	-	-	-	-	●	MS-LRPB-D4-A8-BE	"Pressure regulation range 0.05 ... 2.5 bar, adapter plate for G1/8 EN pressure gauge (without pressure gauge), standard rotary knob with detent, pressure output to rear/front with angled outlet block QS-10"
★	Available and produced in North American Production Facility											
←	NPT ported units available through Festo Germany. Metric ported units with NPT ported connecting plates are available through North American Production Facility.											
●	Produced in Festo Germany only!											
-	Not an available Festo design or configurable option											



**Overview list - Service units MSB4/6 & MSB4/6N**

MSB CODE	ISO-G Porting					NPT Porting					Type	Description
	MSB4		MSB6			MSB4N		MSB6N				
	1/8	1/4	1/4	3/8	1/2	1/8	1/4	1/4	3/8	1/2		
Pressure regulator MS-LRB												
R11	-	-	-	-	●	-	-	-	-	●	MS-LRPB-D5-A8-BE	Pressure regulation range 0.1 ... 4 bar, adapter plate for G1/8 EN pressure gauge (without pressure gauge), standard rotary knob with detent, pressure output to rear/front with angled outlet block QS-10
R12	-	-	-	-	●	-	-	-	-	●	MS-LRPB-D7-A8-BE	Pressure regulation range 0.1 ... 12 bar, adapter plate for G1/8 EN pressure gauge (without pressure gauge), standard rotary knob with detent, pressure output to rear/front with angled outlet block QS-10
Electric pressure regulator MS-LRE (not with EX2/EX4 EU certification)												
S1	-	-	-	-	●	-	-	-	-	●	MS-LRE-D6	Pressure regulation range 0.3 ... 7 bar, integrated MS pressure gauge with outer scale in bar and inner scale in psi
S2	-	-	-	-	●	-	-	-	-	●	MS-LRE-D7	Pressure regulation range 0.5 ... 12 bar, integrated MS pressure gauge with outer scale in bar and inner scale in psi
S3	-	-	-	-	●	-	-	-	-	●	MS-LRE-D6-PI	"Pressure regulation range 0.3 ... 7 bar, integrated MS pressure gauge with outer scale in bar and inner scale in psi, electrical pressure output (integrated pressure sensor with current output, plug M8x1, 3-pin)"
S4	-	-	-	-	●	-	-	-	-	●	MS-LRE-D7-PI	Pressure regulation range 0.5 ... 12 bar, integrated MS pressure gauge with outer scale in bar and inner scale in psi, electrical pressure output (integrated pressure sensor with current output, plug M8x1, 3-pin)
S5	-	-	-	-	●	-	-	-	-	●	MS-LRE-D6-PU	"Pressure regulation range 0.3 ... 7 bar, integrated MS pressure gauge with outer scale in bar and inner scale in psi, electrical pressure output (integrated pressure sensor with voltage output, plug M8x1, 3-pin)"
S6	-	-	-	-	●	-	-	-	-	●	MS-LRE-D7-PU	Pressure regulation range 0.5 ... 12 bar, integrated MS pressure gauge with outer scale in bar and inner scale in psi, electrical pressure output (integrated pressure sensor with voltage output, plug M8x1, 3-pin)
Flow sensor SFAM												
U5	-	-	-	-	●	-	-	-	-	●	SFAM-1000-M-2SA-M12	Flow measuring range 10 ... 1,000 l/min, electrical output (2x PNP or NPN, 1 analogue output 4 ... 20 mA), electrical connection (plug M12x1, 5-pin)
U6	-	-	-	-	●	-	-	-	-	●	SFAM-1000-M-2SV-M12	Flow measuring range 10 ... 1,000 l/min, electrical output (2x PNP or NPN, 1 analogue output 0 ... 10 V), electrical connection (plug M12x1, 5-pin)
U7	-	-	-	-	●	-	-	-	-	●	SFAM-3000-M-2SA-M12	Flow measuring range 30 ... 3,000 l/min, electrical output (2x PNP or NPN, 1 analogue output 4 ... 20 mA), electrical connection (plug M12x1, 5-pin)
U8	-	-	-	-	●	-	-	-	-	●	SFAM-3000-M-2SV-M12	Flow measuring range 30 ... 3,000 l/min, electrical output (2x PNP or NPN, 1 analogue output 0 ... 10 V), electrical connection (plug M12x1, 5-pin)
U9	-	-	-	-	●	-	-	-	-	●	SFAM-5000-M-2SA-M12	Flow measuring range 50 ... 5,000 l/min, electrical output (2x PNP or NPN, 1 analogue output 4 ... 20 mA), electrical connection (plug M12x1, 5-pin)
U10	-	-	-	-	●	-	-	-	-	●	SFAM-5000-M-2SV-M12	Flow measuring range 50 ... 5,000 l/min, electrical output (2x PNP or NPN, 1 analogue output 0 ... 10 V), electrical connection (plug M12x1, 5-pin)
Soft-start and exhaust valve MS-SV (not with EX2/EX4 EU certification)												
V1	-	-	-	-	☆	-	-	-	-	←	MS-SV-E-10V24-SO-AG	Performance level "e", supply voltage 24 V DC, operating pressure 3.5 ... 10 bar, open silencer, integrated MS pressure gauge with outer scale in bar and inner scale in psi, without multi-pin plug socket
V2	-	-	-	-	☆	-	-	-	-	←	MS-SV-E-10V24-AG	Performance level "e", supply voltage 24 V DC, operating pressure 3.5 ... 10 bar, without silencer, integrated MS pressure gauge with outer scale in bar and inner scale in psi, without multi-pin plug socket
V3	-	-	-	-	☆	-	-	-	-	←	MS-SV-E-10V24-AD1	Performance level "e", supply voltage 24 V DC, operating pressure 3.5 ... 10 bar, without silencer, pressure sensor with LCD display (plug M8, 1 switching output PNP, 3-pin), without multi-pin plug socket
V4	-	-	-	-	●	-	-	-	-	-	● <b>Local Production - Coming Soon</b>	Performance level "e", supply voltage 24 V DC, operating pressure 3.5 ... 10 bar, open silencer, pressure sensor with LCD display (plug M8, 1 switching output PNP, 3-pin), without multi-pin plug socket
☆	Available and produced in North American Production Facility											
←	NPT ported units available through Festo Germany. Metric ported units with NPT ported connecting plates are available through North American Production Facility.											
●	Produced in Festo Germany only!											
-	Not an available Festo design or configurable option											

**Overview list - Service units MSB4/6 & MSB4/6N**

MSB CODE	ISO-G Porting					NPT Porting					Type	Description
	MSB4		MSB6			MSB4N		MSB6N				
	1/8	1/4	1/4	3/8	1/2	1/8	1/4	1/4	3/8	1/2		
Soft-start and exhaust valve MS-SV (not with EX2/EX4 EU certification)												
V5	-	-	-	-	●	-	-	-	-	-	● Local Production - Coming Soon	Performance level "e", supply voltage 24 V DC, operating pressure 3.5 ... 10 bar, open silencer, integrated MS pressure gauge with outer scale in bar and inner scale in psi, multi-pin plug socket (Sub-D, 9-pin, screw terminal, without cable, enable signals static)
V6	-	-	-	-	●	-	-	-	-	-	● Local Production - Coming Soon	Performance level "e", supply voltage 24 V DC, operating pressure 3.5 ... 10 bar, without silencer, integrated MS pressure gauge with outer scale in bar and inner scale in psi, multi-pin plug socket (Sub-D, 9-pin, screw terminal, without cable, enable signals static)
V7	-	-	-	-	●	-	-	-	-	-	● Local Production - Coming Soon	Performance level "e", supply voltage 24 V DC, operating pressure 3.5 ... 10 bar, without silencer, pressure sensor with LCD display (plug M8, 1 switching output PNP, 3-pin), multi-pin plug socket (Sub-D, 9-pin, screw terminal, without cable, enable signals static)
V8	-	-	-	-	●	-	-	-	-	-	● Local Production - Coming Soon	Performance level "e", supply voltage 24 V DC, operating pressure 3.5 ... 10 bar, open silencer, pressure sensor with LCD display (plug M8, 1 switching output PNP, 3-pin), multi-pin plug socket (Sub-D, 9-pin, screw terminal, without cable, enable signals static)
V12	-	-	-	-	☆	-	-	-	-	←	MS-SV-C-10V24-S	Performance level "c", supply voltage 24 V DC, operating pressure 3 ... 10 bar, electrical connection to EN 175301-803 (plug connector, 2-pin, type C), silencer, cover plate
V22	-	-	-	-	●	-	-	-	-	-	● Local Production - Coming Soon	Performance level "c", supply voltage 24 V DC, operating pressure 3 ... 10 bar, electrical connection to EN 175301-803 (plug connector, 2-pin, type C), silencer, pressure sensor with operational status indicator (plug M8, threshold value comparator, PNP, N/O contact)
V27	-	-	-	-	●	-	-	-	-	-	MS-SV-E-ASIS-AG	Performance level "e", supply voltage 22 ... 31.6 V DC (AS-I Safety at Work, SPEC 3.0, Profile 7.5.5), operating pressure 3.5 ... 10 bar, without silencer, integrated MS pressure gauge with outer scale in bar and inner scale in psi
V28	-	-	-	-	●	-	-	-	-	-	MS-SV-E-ASIS-SO-AG	Performance level "e", supply voltage 22 ... 31.6 V DC (AS-I Safety at Work, SPEC 3.0, Profile 7.5.5), operating pressure 3.5 ... 10 bar, open silencer, integrated MS pressure gauge with outer scale in bar and inner scale in psi
V31	-	-	-	-	●	-	-	-	-	-	● Local Production - Coming Soon	Performance level "e", supply voltage 24 V DC, operating pressure 3.5 ... 10 bar, open silencer, integrated MS pressure gauge with outer scale in bar and inner scale in psi, multi-pin plug socket (Sub-D, 9-pin, screw terminal, without cable, enable signals static, short-circuit detection possible)
V32	-	-	-	-	●	-	-	-	-	-	● Local Production - Coming Soon	Performance level "e", supply voltage 24 V DC, operating pressure 3.5 ... 10 bar, without silencer, integrated MS pressure gauge with outer scale in bar and inner scale in psi, multi-pin plug socket (Sub-D, 9-pin, screw terminal, without cable, enable signals static, short-circuit detection possible)
V33	-	-	-	-	●	-	-	-	-	-	● Local Production - Coming Soon	Performance level "e", supply voltage 24 V DC, operating pressure 3.5 ... 10 bar, without silencer, pressure sensor with LCD display (plug M8, 1 switching output PNP, 3-pin), multi-pin plug socket (Sub-D, 9-pin, screw terminal, without cable, enable signals static, short-circuit detection possible)
V34	-	-	-	-	●	-	-	-	-	-	● Local Production - Coming Soon	Performance level "e", supply voltage 24 V DC, operating pressure 3.5 ... 10 bar, open silencer, pressure sensor with LCD display (plug M8, 1 switching output PNP, 3-pin), multi-pin plug socket (Sub-D, 9-pin, screw terminal, without cable, enable signals static, short-circuit detection possible)
V35	-	-	-	-	●	-	-	-	-	-	● Local Production - Coming Soon	Performance level "c", supply voltage 24 V DC, operating pressure 3 ... 10 bar, electrical connection to IEC 61076-2-101 (plug connector M12x1, 2-pin), silencer, cover plate
V36	-	-	-	-	●	-	-	-	-	-	● Local Production - Coming Soon	Performance level "c", supply voltage 24 V DC, operating pressure 3 ... 10 bar, electrical connection to IEC 61076-2-101 (plug connector M12x1, 2-pin), silencer, pressure sensor with operational status indicator (plug M8, threshold value comparator, PNP, N/O contact)
☆	Available and produced in North American Production Facility											
←	NPT ported units available through Festo Germany. Metric ported units with NPT ported connecting plates are available through North American Production Facility.											
●	Produced in Festo Germany only!											
-	Not an available Festo design or configurable option											

**Overview list - Service units MSB4/6 & MSB4/6N**

MSB CODE	ISO-G Porting					NPT Porting					Type	Description
	MSB4		MSB6			MSB4N		MSB6N				
	1/8	1/4	1/4	3/8	1/2	1/8	1/4	1/4	3/8	1/2		
Soft-start and exhaust valve MS-SV (not with EX2/EX4 EU certification)												
V37	-	-	-	-	●	-	-	-	-	-	MS-SV-D-10V24-2M8 ● Local Production - Coming Soon	Performance level "d", supply voltage 24 V DC, operating pressure 3.5 ... 10 bar, electrical connection to EN 175301-803 (2 x plug connectors, 2-pin, type C), 2 proximity sensors SMT with cable (plug connector M8x1, 3-pin, rotatable thread, cable length 0.3 m), without silencer, cover plate
V38	-	-	-	-	●	-	-	-	-	-	MS-SV-D-10V24-2M8-SO-AG ● Local Production - Coming Soon	Performance level "d", supply voltage 24 V DC, operating pressure 3.5 ... 10 bar, electrical connection to EN 175301-803 (2 x plug connectors, 2-pin, type C), 2 proximity sensors SMT with cable (plug connector M8x1, 3-pin, rotatable thread, cable length 0.3 m), open silencer, integrated MS pressure gauge with outer scale in bar and inner scale in psi
V39	-	-	-	-	●	-	-	-	-	-	MS-SV-D-10V24P-2M12-SO-AG ● Local Production - Coming Soon	Performance level "d", supply voltage 24 V DC, operating pressure 3.5 ... 10 bar, electrical connection to IEC 61076-2-101 (2 x plug connectors M12x1, 2-pin), 2 proximity sensors SMT with cable (plug connector M12x1, 3-pin, rotatable thread, cable length 0.3 m), open silencer, integrated MS pressure gauge with outer scale in bar and inner scale in psi
V40	-	-	-	-	●	-	-	-	-	-	MS-SV-D-10V24P-20E-SO-AG ● Local Production - Coming Soon	Performance level "d", supply voltage 24 V DC, operating pressure 3.5 ... 10 bar, electrical connection to IEC 61076-2-101 (2 x plug connectors M12x1, 2-pin), 2 proximity sensors SMT with cable (open end, 3-wire, cable length 5 m), open silencer, integrated MS pressure gauge with outer scale in bar and inner scale in psi
V41	-	-	-	-	●	-	-	-	-	-	MS-SV-E-10V24-SO-AG-MP5 ● Local Production - Coming Soon	Performance level "e", supply voltage 24 V DC, operating pressure 3.5 ... 10 bar, open silencer, integrated MS pressure gauge with outer scale in bar and inner scale in psi, multi-pin plug socket (Sub-D, 9-pin, screw terminal, without cable, enable signals static, galvanic isolation of the enable signals from the supply voltage)
V42	-	-	-	-	●	-	-	-	-	-	MS-SV-E-10V24-AG-MP5 ● Local Production - Coming Soon	Performance level "e", supply voltage 24 V DC, operating pressure 3.5 ... 10 bar, without silencer, integrated MS pressure gauge with outer scale in bar and inner scale in psi, multi-pin plug socket (Sub-D, 9-pin, screw terminal, without cable, enable signals static, galvanic isolation of the enable signals from the supply voltage)
V43	-	-	-	-	●	-	-	-	-	-	MS-SV-E-10V24-AD1-MP5 ● Local Production - Coming Soon	Performance level "e", supply voltage 24 V DC, operating pressure 3.5 ... 10 bar, without silencer, pressure sensor with LCD display (plug M8, 1 switching output PNP, 3-pin), multi-pin plug socket (Sub-D, 9-pin, screw terminal, without cable, enable signals static, galvanic isolation of the enable signals from the supply voltage)
V44	-	-	-	-	●	-	-	-	-	-	MS-SV-E-10V24-SO-AD1-MP5 ● Local Production - Coming Soon	Performance level "e", supply voltage 24 V DC, operating pressure 3.5 ... 10 bar, open silencer, pressure sensor with LCD display (plug M8, 1 switching output PNP, 3-pin), multi-pin plug socket (Sub-D, 9-pin, screw terminal, without cable, enable signals static, galvanic isolation of the enable signals from the supply voltage)
V45	-	-	-	-	●	-	-	-	-	-	MS-SV-E-10V24-RG ● Local Production - Coming Soon	Performance level "e", supply voltage 24 V DC, operating pressure 3.5 ... 10 bar, without silencer, integrated MS pressure gauge with red-green scale with outer scale in bar and inner scale in psi, without multi-pin plug socket, without multi-pin plug socket
V46	-	-	-	-	●	-	-	-	-	-	MS-SV-E-10V24-SO-RG ● Local Production - Coming Soon	Performance level "e", supply voltage 24 V DC, operating pressure 3.5 ... 10 bar, open silencer, integrated MS pressure gauge with red-green scale with outer scale in bar and inner scale in psi, without multi-pin plug socket, without multi-pin plug socket
V47	-	-	-	-	●	-	-	-	-	-	MS-SV-D-10V24-2M8-SO-RG ● Local Production - Coming Soon	Performance level "d", supply voltage 24 V DC, operating pressure 3.5 ... 10 bar, electrical connection to EN 175301-803 (2 x plug connectors, 2-pin, type C), 2 proximity sensors SMT with cable (plug connector M8x1, 3-pin, rotatable thread, cable length 0.3 m), open silencer, integrated MS pressure gauge with red-green scale with outer scale in bar and inner scale in psi
☆	Available and produced in North American Production Facility											
←	NPT ported units available through Festo Germany. Metric ported units with NPT ported connecting plates are available through North American Production Facility.											
●	Produced in Festo Germany only!											
-	Not an available Festo design or configurable option											

**Overview list - Service units MSB4/6 & MSB4/6N**

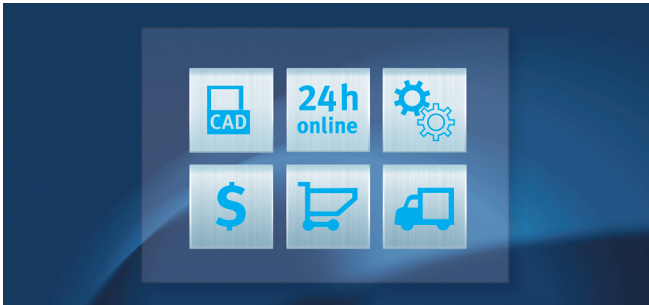
MSB CODE	ISO-G Porting					NPT Porting					Type	Description
	MSB4		MSB6			MSB4N		MSB6N				
	1/8	1/4	1/4	3/8	1/2	1/8	1/4	1/4	3/8	1/2		
Soft-start and exhaust valve MS-SV (not with EX2/EX4 EU certification)												
V48	-	-	-	-	●	-	-	-	-	-	MS-SV-D-10V24P-2M12-SO-RG ● Local Production - Coming Soon	Performance level "d", supply voltage 24 V DC, operating pressure 3.5 ... 10 bar, electrical connection to IEC 61076-2-101 (2 x plug connectors M12x1, 2-pin), 2 proximity sensors SMT with cable (plug connector M12x1, 3-pin, rotatable thread, cable length 0.3 m), open silencer, integrated MS pressure gauge with red-green scale with outer scale in bar and inner scale in psi
V49	-	-	-	-	●	-	-	-	-	-	MS-SV-D-10V24-20E-SO-RG ● Local Production - Coming Soon	Performance level "d", supply voltage 24 V DC, operating pressure 3.5 ... 10 bar, electrical connection to EN 175301-803 (2 x plug connectors, 2-pin, type C), 2 proximity sensors SMT with cable (open end, 3-wire, cable length 5 m), open silencer, integrated MS pressure gauge with red-green scale with outer scale in bar and inner scale in psi
Precision pressure regulator MS-LRPB												
W1	-	-	★	★	★	-	-	★	★	★	MS-LWS-U-V	Metal bowl, fully automatic condensate drain
★	Available and produced in North American Production Facility											
←	NPT ported units available through Festo Germany. Metric ported units with NPT ported connecting plates are available through North American Production Facility.											
●	Produced in Festo Germany only!											
-	Not an available Festo design or configurable option											



## The Festo Online Shop: advantages 24/7

The Festo Online Shop is far more than just a direct way to buy products. It provides you with support right around the clock in your design, planning, purchasing and maintenance work. This speeds up your processes and ensures maximum transparency and reliability.

Faster and Easier than ever! For more information please visit → [www.festo.us/ols](http://www.festo.us/ols)



Filter regulator MS6-LFR

Select features | Product list | My favorites | Reset

MS6-LFR-1/2-D6-E-R-M

Basic Features	
Series	MS Standard *
Size	6 *
Function	LFR Filter regulator *
Pneumatic connection	<input checked="" type="checkbox"/> 1/2 Internal thread G1/2 *
Pressure regulation range	<input checked="" type="checkbox"/> D6 0.3 ... 7 bar *
Degree of filtration	<input checked="" type="checkbox"/> E 40 µm *
Bowl	<input checked="" type="checkbox"/> R Plastic bowl with plastic bowl guard *
Condensate drain	<input checked="" type="checkbox"/> M Manual *

Valid selection

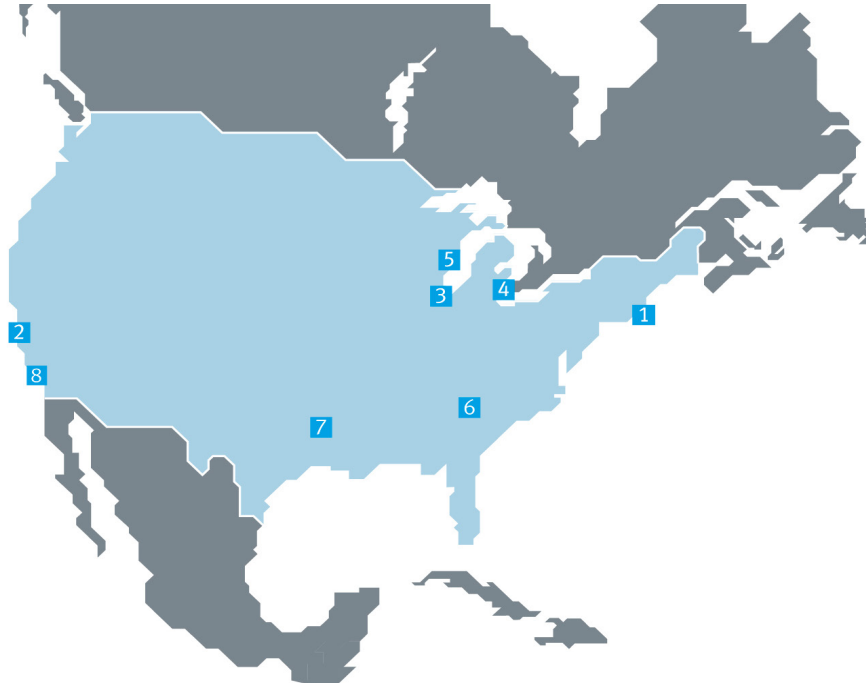
Connect with us



[www.festo.us/socialmedia](http://www.festo.us/socialmedia)



# Festo - Your Partner in Automation



**1 Festo Corporation United States Headquarters**  
395 Moreland Road  
Hauppauge, NY 11788



**2 Silicon Valley**  
4935 Southfront Road, Suite F  
Livermore, CA 94550



**3 Chicago**  
85 W Algonquin, Suite 340  
Arlington Heights, IL 60005

**4 Detroit**  
1441 West Long Lake Road  
Troy, MI 48098

**5 Appleton**  
N922 Tower View Dr, Suite 200  
Greenville, WI 54942

**6 Charlotte**  
4600 Lebanon Road, Unit G  
Charlotte, NC 28227

**7 Dallas**  
17440 Dallas Parkway, Suite 211  
Dallas, TX 75287

**8 Southern California**  
3183 F Airway Avenue  
Costa Mesa, CA 92626

**9 Regional Service Center**  
7777 Columbia Rd.  
Mason, OH 45040

## Festo Regional Contact Center

**Customer Service**  
Tel: 1 800 99 FESTO (1 800 993 3786)  
Fax: 1 800 96 FESTO (1 800 963 3786)  
Email: customer.service@festo.com

**Product Support**  
Tel: 1 866 GO FESTO (1 866 463 3786)  
Fax: 1 800 96 FESTO (1 800 963 3786)  
Email: product.support@festo.com



## Engineering and Manufacturing Excellence. Festo's Quality Assurance, ISO 9001 Certification

Festo Corporation is committed to supply all Festo products and services that will meet or exceed our customers' requirements in product quality, delivery, customer service and satisfaction.

The Executive Management Team determines the guidelines of the Quality & Environmental Policy, keeps itself informed regarding quality and environmental performance, and supports the validity of the Quality and Environmental Management System.

Connect with us



www.festo.us/socialmedia



www.festo.us