

From the sketching to the planning to the documentation of systems – with **FluidDRAW®** you save time and retain reliability. Thanks to the library of standard symbols, you can be assured of complying with all specifications of current standards.

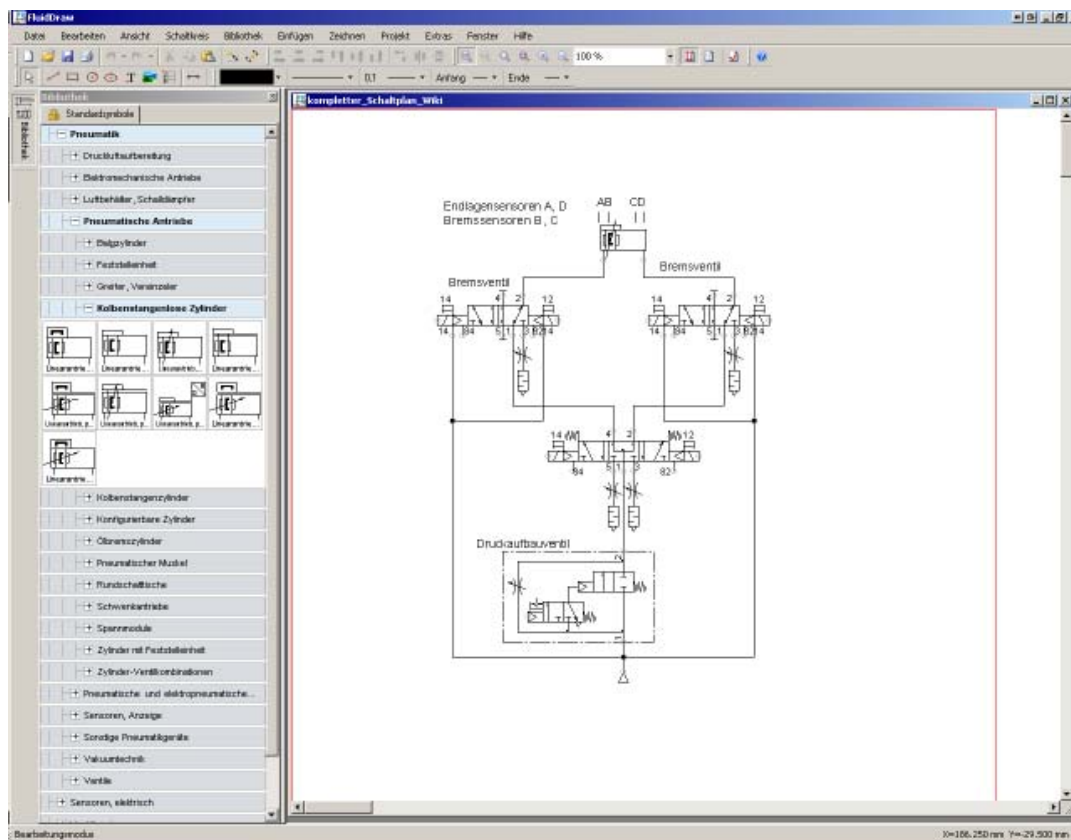
- Quick and easy creation of pneumatic circuit diagrams
- Comprehensive library of pneumatic and electrical symbols
- User-specific product databases and translation tables
- Terminal plans, cable diagrams, cable lists, parts lists
- Dimensioning function for preparing simple control cabinet and system layouts
- Consistent equipment identification
- Multi-level project tree

## FluidDraw

Drawing circuit diagrams - only a few years ago, this was still a strenuous task using a sharp pencil and templates. But Festo is able to provide computer-aided support. The software **FluidDRAW®** operates using an integrated library; the stored symbols are produced to DIN standard. If required, **FluidDRAW®** can work with the Festo digital product catalogue. Here important parameters such as the part number, type designation etc. can be directly included and immediately assigned to a parts list.

## Functions

For drives, valves, valve terminals, air preparation, vacuum technology, flow/shut-off valves etc.: simply position the required symbols in the circuit through drag & drop or the search function.



## Processing

---

- Continuous rotation and scaling
- Intelligent grid with automatic overlaying of auxiliary lines for aligning symbols
- Improved automatic cable routing
- Manual setting of interpolation points for connecting lines possible
- New function to make drawing working lines easier
- Multiple window views of a drawing page can be displayed and edited at the same time
- Navigation window with selection of the page detail
- Extended drawing functions
- Basic graphic elements: lines with different arrowheads, rectangle, circle, ellipsis, text, graphic
- Simultaneous editing of the geometric properties of highlighted objects
- Extended undo/redo function
- Free input and positioning of connection designations

## Parts lists

---

- New parts list representation
- Extended functions for selecting the listed project files
- Printing of long lists over multiple pages
- Direct editing of attributes in the parts list
- Search function for components associated with the respective list entry
- Interface to the Festo online shopping basket

## Projects

---

- Clearer representation of the project files
- Improved administration of the project attributes
- Copying of the globally defined drawing frame to new pages

## General remarks

---

- Greater drawing precision, greater zoom scale as a result (max. 10,000%)
- New file format in XML syntax
- Extended administration functions for user-specific symbol libraries
- More efficient storage of libraries (better performance in the network)
- Consistent separation of program and user files (fewer problems with permissions in the network)
- Explicit specification of folder paths (no hidden INI entries required)
- Better utilization of multi-processor systems through the use of background processes
- All attribute values can be displayed at any position as text references
- Support for up to 255 drawing levels
- No internal restriction on the number of objects (support for more extensive circuits/larger projects)
- Direct access to the databases of the Festo catalogue (avoids interfacing problems with xDKI)
- More precise definition of the page boundaries when printing